

THAMES DITTON TODAY

THAMES DITTON • WESTON GREEN • EAST MOLESEY

SUMMER ON THE GREEN



THE MAGAZINE OF THE
THAMES DITTON & WESTON GREEN RESIDENTS' ASSOCIATION

S U M M E R 2 0 2 5



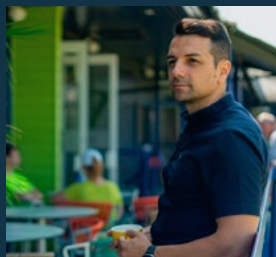
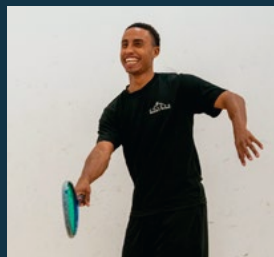
COLETS

HEALTH & FITNESS

- EST 1977 -



25M POOL
2-STOREY GYM
ONSITE CRÈCHE
WELLNESS & SPA
FITNESS CLASSES
BAR & RESTAURANT
COLETS DAY NURSERY
EVENTS & SPORTS CLUBS



It starts
with you.
**It begins
at Colets.**

*The Health
and Heart
of Thames
Ditton*



BECOME A MEMBER. JOIN TODAY

020 8398 7108 | colets.co.uk/join-now

St Nicholas Road, Thames Ditton, KT7 0PW



THAMES DITTON TODAY

Published quarterly since 1970

In this Issue:

Editor

Paul Ovington
editor@residents-association.com

Magazine Design

Guy Holman
14 Hayward Road, KT7 0BE
020 8398 1770

Distribution

David Youd
6 Riversdale Road
Thames Ditton KT7 0QL
020 8398 3216

Advertisement Manager

Verity Park
20 Portsmouth Avenue
Thames Ditton KT7 0RT
020 8398 5926

Contributors

You are welcome to submit articles
or images. Please contact the
Editorial Team at editor@residents-association.com

Advertisers


Thames Ditton Today is delivered
to an influential 5000 households
throughout Thames Ditton, Weston
Green and East Molesey. Contact
Verity Park for rates for full page,
half and quarter page advertising.

| | |
|-------------------------------------------------------------------------------------------|----|
| News from the Residents Association | 7 |
| The Secret Gardens of Thames Ditton | 10 |
| Update from your Residents' Association Councillors at Elmbridge Borough Council | 12 |
| Update from Nick Darby, Surrey County Council..... | 15 |
| All change in Surrey Councils: The view from your RA Councillors | 17 |
| Flooding in Thames Ditton – mixed news | 19 |
| Fifty years of Conservation in Thames Ditton and Weston Green | 22 |
| White Church appeal fund news Weston Green | 29 |
| Ember Bowls Club celebrates its 75th anniversary | 33 |
| Meet your distributors – Lesley Haynes | 37 |
| Spring Crossword Solution | 42 |
| Summer Crossword..... | 43 |
| Services, Clubs, Societies and Groups..... | 44 |
| Nature & Climate Festival 2025 | 46 |

Cover: *Thames Ditton Cricket Club has been playing on Giggs Hill
Green for nearly 200 years, entertaining locals and passers
by throughout the summer*

www.residents-association.com

Officers and staff of the Association are volunteers, but we must fund costs of this magazine, administrative and election expenses, and other expenses such as spring bulb-planting and village Christmas trees. The subscription is only £5 per household. If you can contribute more, please do so. Subscriptions can be paid via our website www.residents-association.com; subscriptions (in an envelope please) may be left at View, 34 High Street, Thames Ditton or Thorkhill Road Pharmacy, 94 Thorkhill Road, Thames Ditton. Or mail to Membership Secretary Peter Haynes at 6 Onslow Gardens, Thames Ditton KT7 0JJ. Thank you.



DanceCraft
M&M

"We believe that by encouraging our pupils to love dance and enjoy their classes it will not only be exercise for the body but for their hearts and minds too."

Specialists in Dance & Performance training for Pre-school to Senior School aged children.

Classes in and around Esher.

Contact: Maria at mias33@hotmail.co.uk
Call or text to: 07800 860898
or visit our website www.mmdancecraft.com

PAINTERS & DECORATORS

We are residential painters and decorators with 20 years experience, we offer wallpapering, painting and paint effects for internal and external decorating

We work in a clean and efficient manner, causing minimal disruption in your home and come highly recommended



Contact Clive Hogg
to discuss your
decorating needs

020 8339 0712

m: 07957 582296
e: clive.hogg.ch@gmail.com

15 Hampton Court Avenue, East Molesey, Surrey, KT8 0BG



THE Green OUTDOORS

TREE CUTTING / PRUNING
HEDGE CUTTING
GARDEN SERVICES & CLEARANCE
TREE PLANTING / STUMP REMOVAL
PRESSURE WASHING
& MORE

CALL 07745145433
--- Free Quote & Advice ---



THAMES DITTON AND WESTON GREEN RESIDENTS' ASSOCIATION

About the Association

Founded in 1934, the Residents' Association is a strong, locally based non-party-political organisation, concerned with protecting the amenities and furthering the interest of residents.

We work to preserve and enhance the best in our attractive environment and the quality of life of everyone in our community.

Through regular meetings, social activities, our magazine and website we keep in touch with residents' views and we raise and spend funds for the benefit of the community, from tree and bulb planting to contesting unacceptable development projects.

With six Residents' Councillors we have a strong voice on Elmbridge Council, working with other residents' councillors to ensure that decisions are based on the needs of local communities and on good management, rather than on party politics. Our Residents' County Councillor, Nick Darby, represents our views at Surrey County Council.

Our activities over the past year are summed up in the 2024-2025 report presented by Chair Alex Batchelor at the AGM in March. His report can be seen on the RA website.

President: Martin Wilberforce

7 River Avenue,
Thames Ditton 020 8398 4732

Vice President: Ruth Lyon,

11 Riversdale Road,
Thames Ditton 0208 398 3396

Vice President Tannia Shipley,

27 Lower Green Road, Esher 020 8398 2484

Surrey County Councillor: Nick Darby,

12 Basing Close, Thames Ditton 020 8398 2382

Thames Ditton Borough Councillors

Alex Batchelor,
12 Hayward Road,
Thames Ditton 07710 943140

Caroline James,
Laurel Cottage, 20 High Street,
Thames Ditton 07970 672723

Elaine Sesemann,
14 Ennismore Gardens
Thames Ditton 07801 943392

Hinchley Wood & Weston Green Borough Councillors

Gill Coates,
The Oaks, Orchard Gate,
Esher 020 8873 3040

Janet Turner, 2 Montgomery Ave,
Hinchley Wood 020 8398 1565
James Crawshaw 07500 688632

Officers

Chair: Alex Batchelor
Hon. Treasurer: Christa Silverthorne
62 Thorkhill Road, Thames Ditton 020 8398 7101

Hon. Secretary: Florian Traub,
33 Portsmouth Avenue, Thames Ditton 07917 643 224

Membership Secretary: Peter Haynes
6 Onslow Gardens, Thames Ditton 020 8398 6019

Conveners of Sub-Committees

Health and Community: Karen Randolph
Deepfield, Giggs Hill Road,
Thames Ditton 020 8398 5005

Planning: Rhodri Richards,
Ditton Cottage, Giggs Hill Road,
Thames Ditton 020 8398 4962

Highways, Drainage: Andrew Roberts,
1 Boyle Farm Road, Thames Ditton 020 8786 6882

Flooding: Tony Thompson,
Willow End, River Bank, Thames Ditton 07736 677671



THE NEXT RESIDENTS' ASSOCIATION OPEN MEETINGS ARE

Tuesday 24 June 8pm - Imber Court
Tuesday 30 September 8pm - Vera Fletcher Hall
Tuesday 25 November 8pm - Vera Fletcher Hall

ALL WHO LIVE AND WORK LOCALLY ARE WELCOME



Craft my Day

*Sewing, Sculpting, Mosaic, Macrame,
Painting and more!*

**Thames Ditton
Worcester Park**

**Adult Craft Workshops
Short Courses
Kids Clubs
Parties
Holiday Clubs**



www.craftmyday.com

Antique Clock Restoration & Repair

Specialising in Grandfather, Dial,
Bracket and Carriage Clocks

Contact: Mark Rowe M.B.H.I
BADA Diploma. Member of the Watch &
Clockmakers Guild. West Dean Diploma.



Tel: 020 8605 0331

www.theclockgallery.co.uk

Additional Restoration services available
for Watches, Books, Ceramics and Fine Furniture.
Antique Clocks also bought and sold.



getting ready for summer!

love thames ditton
shoplocal

view
thames ditton

34 High Street Thames Ditton KT7 0RY 020 8972 9706


 @ViewGifts www.view-gifts.com

design: www.thesetupdesign.com

News from the Residents' Association to end - May



A warm welcome

We are delighted to welcome two new businesses to the village. Following the closure of The Foundry, Esher brewer, The Big Smoke Brew Co, has reopened the pub under its original name of the Red Lion. Big Smoke also owns six other pubs including the popular The Antelope in Surbiton and The Poyntz Arms in East Molesey.

Recently opened on the High Street is the Hamilton Gold Company. Owner Jordan Hamilton is an expert in buying and selling vintage jewellery, luxury watches, diamonds and precious metals and also provides a design service for engagement and wedding rings.



Scouts at the plant stall

2025 Dittons Fair, now in its 67th year, was a huge success, attracting one of its biggest ever crowds. Organised by Dittons Scouts group and sponsored by John D Wood, the Fair raised awareness and funds

for among others the RNLI, Long Ditton Guides, Working for Wildlife, London Search & Rescue, St Nicholas Church and Elmbridge Friends of the Earth. With a theme marking 80 years since VE Day, the Fair was also notable for marking the retirement after 35 years of Beaver Leader and Fair organiser David Cooper, during which time he has helped around 1,000 local children develop and grow through the Beavers.



David Cooper with the Scout Group

Vital Village garden to benefit from Hampton Court Garden Festival

The new garden at the front of Vital Village is about to be the recipient of a wonderful array of healing and drought resistant plants from the 'Woman to Woman' Show Garden at Hampton Court Palace Garden Festival. The design for the garden portrays the reigniting of female ancient healing knowledge and celebrates oral tradition. The practice of passing down knowledge



SoEl Dance Academy at Dittons Fair

through spoken words or song. One of the garden's designers is Gill Hall, whose company www.gillhallgardens.co.uk is one of the participating businesses at Vital Village. Volunteers are welcome to help dig in the plants at Vital Village on 7 July.

Nature and Climate Festival

The Thames Ditton & Weston Green Nature & Climate Festival, sponsored by HJC, is back for a fourth year, from 10 to 12 October. Combining family fun, entertainment, hands-on activities and learning opportunities, there is something for everyone to enjoy and most of it is free! As part of the Festival, we are running a photography competition, open to everyone in Thames Ditton and Weston Green, with a special open category for non-residents and/or photographs taken beyond our locality, including overseas. We want to see your photographs of local wildlife or scenery that capture the very best of our nature and climate in 2025. This competition, sponsored by Killick & Co, is open to all (there is an under 18 category) and the best photographs will be displayed at the Festival in October. Closing date for entries is 19 September.



Scout leader Tony Butcher with helpers

Super Access to Library

We've come a long way since the days Dittons library was simply a shed located on a patch of grass off Mercer Close. Now new technology allows it to offer a free Super Access service to all its 4000 adult registered members. So far only eight per cent of members are making use of Super Access, with most using the space to work or study, with access to the free wifi or computer. Alex Anderson, manager of Dittons library, wants more registered members to see the possibilities "Many of our members find they can't get to the library during our staffed hours and this gives them the opportunity to make more use of their membership – even just for choosing books. If you belong to a book group or debating society or similar, you might like to consider the library's comfortable atrium as a venue for your meetings," he said. www.surreycc.gov.uk/libraries/your-library/find-your-nearest/dittons

All Saints

Events continue throughout the summer at All Saints Weston Green as part of the £100K fund raising to repair and repaint 'the white church by the pond'. In May, a display

of the Weston Green Community archive project took place. This photographic record of All Saints Church and the Weston Green community from 1900 to the present day, was so popular that another display will be held later in the year. The 2025 Flower Festival at All Saints, masterminded by Kate Ellis, had more than 30 exhibitors with the theme 'White' – think Snow White, White Lotus, White Wedding, White Water Rafting.

Rivernook Bowmen is a small, friendly, target archery club with an outdoor range at Imber Court. The club is open to anyone from eight years upwards, from absolute beginners to experienced archers. Shooting is outdoors all year round with social meetings on Sunday mornings, with practice sessions and competitions. Using club equipment, experienced instructors run regular introductory courses through the summer months to show the basics and how



Archery at Imber Court

to shoot safely. Members shoot a variety of bow styles, from traditional English wooden longbows and the popular simple modern barebow style, to the more complex recurve bows (as seen in the Olympics) and American-style compound bows. Visit www.rivernookbowmen.co.uk



Residents of Basingfield Road were among those marking VE day with a street party

Super Secret Gardens of Thames Ditton 2025



It was the best of times...it was nearly the worst of times! After the driest Spring for 70-odd years the longed-for rain finally arrived...and drenched the hardy 20-odd Secret Gardeners of Thames Ditton 2025 on their Saturday private tour of 15 village gardens which were open to the public on Sunday June 8. We were on tenterhooks as to what Sunday would bring.



Secret Gardens HQ at Maybury Lodge

The weather gods being kind, Sunday dawned...bright, sunny and dry! And from 2pm until 5.30pm hundreds of garden visitors crowded a plethora of lovely gardens, paying £7 per person to view a riot of colour and greenery. The day raised more than



Wildflower wonder at Thorkhill Gardens



Tea and cake at Lynton

£3,000 with all proceeds going to the village Christmas lights fund and the Garden of Remembrance at St Nicholas Church.

Huge thanks to all those involved: to the Secret Garden florist and View gift shop for selling advance tickets, to the army of cake-bakers and the team at Lynton Sheltered Housing who provided tea and cakes, to those who provided publicity and help on the day itself – and above all, to all the wonderful Secret Gardeners themselves.

The baton of Secret Gardens now passes to Weston Green for 2026 – see you there!

Andy Anderson
Caroline James
Secret Garden
organisers





THE HAMILTON GOLD COMPANY

SURREY'S PREMIER JEWELLERS AND GOLD BUYERS

We specialise in

- ❖ Scrap gold & silver
- ❖ Investment gold & silver
- ❖ Probate valuations
- ❖ Jewellery alterations
- ❖ Vintage jewellery
- ❖ Swiss watches
- ❖ Engagement & wedding rings
- ❖ Signet rings



Jordan Hamilton

07354 783207

Info@HamiltonGoldCompany.com

www.HamiltonGoldCompany.com

16A High Street, Thames Ditton, KT7 0RY



Update from your Residents' Association

Thames Ditton Ward



Elaine Sesemann
TDWGRA



Caroline James
TDWGRA



Alex Batchelor
TDWGRA

Planning Update

The application for 74 units at the Molesey Venture site was approved by the Planning committee in March 2025. The application took almost 2 years to come to the committee as there were numerous issues with statutory consultees taking a very long time to respond, particularly the Environment Agency. Members of the committee recognised the impact to the immediate neighbours but determined that the benefit of the development - with a large number of affordable units - outweighed the harm. The RA supported the residents and wrote to the council outlining their objections but sadly to no avail. At the time of going to press there is still no sign of the Aldi application for the old Guy Salmon site.

Residents in Hinchley Wood are alarmed to hear the news of a proposed development on Green Belt land at the end of Heathside off the A309. The developers have consulted residents but very strangely have not spoken to Elmbridge Planning Department or sought pre application advice. When and if an application is made for the site, the Residents Associations for Hinchley Wood and Thames Ditton and Weston Green (the site is in Hinchley Wood and Weston Green

Ward) and the councillors will be sure to be heavily involved.

Similarly the RA will be examining a new planning application made to build up to 150 dwellings (with 50 per cent of the accommodation being affordable housing) on the Hill Park Roses site and surrounding areas on the land west of Woodstock Lane North in Long Ditton. Further details on the Elmbridge Planning website under reference number 2025/1325.

Pharmacy campaign update

Karen Randolph, who is leading the RA campaign to restore a pharmacy to the village, gives the latest update.

I hope you will have read the update following the submission of the petition, shown in shop windows in the village and on the RA website. 1200 signatures to the petition was a fantastic achievement – thank you again to everyone who signed. Sian Bates (local resident and former Health Service professional) and I presented the petition to the meeting of the Health & Wellbeing Board (with Surrey Heartlands ICP) in Reigate in March. Unfortunately, the HWB did not change the conclusions of the Pharmaceutical Needs Assessment

Councillors at Elmbridge Borough Council

Hinchley Wood and Weston Green Ward



Gill Coates
TDWGRA



Janet Turner
HWRA



James Crawshaw
HWRA

(that there are NO gaps in pharmaceutical provision – across the whole of Surrey) but the petition did prompt a long debate and we took some comfort from the concluding remarks of the Chair (Tim Oliver, Leader of Surrey County Council) that he expected there to be ‘flexibility’ in the approach to any applications to reopen the pharmacy.

We know that at least one pharmacist has submitted an application to the NHS to open a pharmacy in the village. At the time of writing we have considerable concerns about the process; in particular that those most affected by a decision to reinstate the pharmacy (local residents and representatives, in particular our local councillors, local GP’s, local organisations which are involved with caring for young and old etc) have not been consulted, even though the consultation period ended at the end of May. All three local GP practices - Glenlyn/ Giggs Hill Green, Thorkhill and Esher Green - have expressed their full support for a reinstated pharmacy but, at the time of writing, the process behind the decision by Surrey Heartlands Integrated Care Board (ICB) about whether Thames Ditton will have its long standing pharmacy reinstated, remains unclear. We will keep you updated

on the RA website and hopefully come back with some good news soon. We remain hopeful that common sense and the interests of local residents will prevail but there are considerable hurdles ahead.

Bike shelter Thames Ditton Station

Our application for funding from the Southwestern Railway Customer and Infrastructure Fund to replace the rain cover for the bike racks at Thames Ditton Station was unsuccessful. We are now seeking funding from the Elmbridge Lottery. If you can think of any other funding source, get in touch with Councillor Elaine Sesemann. The cost is approximately £5,000.

Cycle Racks in Village

New cycle racks have now been installed in the corner of the Ashley Road Car park. Please tell any cyclists you know these are now available. We are also trying to secure funding for 2 more cycle hoops outside AC Court in addition to the existing two hoops.

Free Car Parking in Thames Ditton

The first 30 minutes of parking in Ashley Road car park is now FREE! This is an initiative from Elmbridge BC to encourage us to shop local and support our High Street. Please use it!

HJC

We value you

Contact us on 020 8398 3707

Considering moving or simply curious, we offer a free no obligation valuation service.

INDEPENDENT, TRUSTED FINANCIAL ADVICE IN THE HEART OF THAMES DITTON

Knight James' are a friendly, local business offering trusted, impartial financial advice.

Our experienced team are able to offer advice in the following areas:-

- Mortgage & Lending Services
- Investment & Pension Advice
- Portfolio Management
- Retirement & Tax Planning
- Corporate & Employee Benefits
- Commercial Insurance

Contact us today to find out how we can help to put you on the right financial path.



MORTGAGE
SERVICES



COMMERCIAL
INSURANCE



WEALTH
MANAGEMENT



INVESTMENT
& PENSION
ADVICE



Call 020 8398 6677
www.knightjames.com

6 Station Road, Thames Ditton, Surrey KT7 0NR

 **knightjames**
Wealth Management

Update from Nick Darby, our Surrey County Councillor



I have become increasingly concerned about commuter parking, pavement driving and speeding in Station Road. I can understand why people are impatient but there is no reason for the daily incidents of drivers being rude, disrespectful and driving dangerously. Its an accident waiting to happen.

It has reached a point where I will be asking Surrey Highways to consult residents on a comprehensive parking scheme and what changes they would like to see implemented. These could include a 10-12 parking restriction for non residents, introduction of resident only parking areas, double yellow line pull in areas (as successfully introduced in Watts Road) and the possibility of having a pedestrian Pelican crossing by the railway station close to Basingfield Road. To ensure the problem is not just pushed elsewhere, the consultation will also include residents in Speer Road, Weston Green and Embercourt Road. In the meantime more 20mph decals will be added.

As reported elsewhere, the campaign to restore a pharmacy in the High Street, continues. I spoke at the recent Surrey County Council meeting and I am pleased to report I was able to enlist the support of the Leader of the Council, Tim Oliver. He chairs the Surrey Health and Wellbeing Board and will be pushing for Surrey Heartlands Integrated Care Board to change its decision rejecting the need for a pharmacy.

A warning to all ratepayers

Your RA councillors on Elmbridge Borough

Council outline their position and concerns for the reorganisation of local government in Surrey on page 17. What is my concern, is the financial implications of the proposed changes to all ratepayers.



*Surrey County
Councillor, (The Dittons)
Nick Darby*

As things stand Woking Council has debts of £1.5 billion and the cost of servicing this debt is £171 million annually. Yet Woking's annual budget was only £23 million. While efforts are being made to ask Government to write off the debt, if it does not agree to do so, the burden will likely fall on all Surrey County Council ratepayers, including those living in Elmbridge. My calculations are that everyone will have to pay an extra 15 per cent annually on their rates (per household, based on band G) to cover the cost of servicing the debt, equivalent to at least an extra £500 per household for many years. This is in addition to annual rises in rates, currently 5 per cent. In addition the Government is reviewing central funding to county councils, which may add a further 3 per cent to your rates.

The increased costs caused by Woking's disastrous investment policy will leave everyone worse off. I am afraid the Government will not make a ruling on Surrey's local government reorganisation and the debt issue until at least November. But you should all be prepared for the worst.

SPRINT MARTIAL ARTS: **YOUR PATH TO** **EMPOWERMENT**

Since 2009, **Sprint Martial Arts** has offered age-specific courses for individuals from children to those aged 65 and beyond. We excel in welcoming beginners with our successful classes, where experienced instructors help you build skills, confidence, and fitness in a supportive environment.

PROGRAMS:

- ✓ **LITTLE DRAGONS 4-6 YEARS**
- ✓ **JUNIORS 7-13 YEARS**
- ✓ **ADULTS** ✓ **WOMEN'S ONLY**



JOIN US TODAY AND EXPERIENCE THE TRANSFORMATIVE POWER OF MARTIAL ARTS!

Hollyfield school

📍 Surbiton Hill Rd, Surbiton KT6 4TU

Alcheme wellbeing

📍 23-25 Brighton Rd, Surbiton KT6 5LR

☎ **07801 852012**

☎ **07739 638209**

All change in Surrey Councils - the view from your Elmbridge Borough Councillors



Few residents are aware of the massive changes happening within local government that will have lasting changes on our Council services. The Government believes in devolving powers to Mayoral authorities, which are already working well in some parts of the Country, and wants to roll them out across the rest of the UK. The idea is to devolve decision making and spending powers 'from Whitehall to the Town Hall' and reduce local authority dependence on government funding so they can focus on areas most in need. The fall-out of this is that 'two tier' local authorities, such as we have in Surrey with one County Council (SCC) and eleven Districts and Boroughs (of which Elmbridge - EBC - is one) are being abolished and replaced with Unitary Authorities that deliver all the services currently offered by both tiers.

Sounds sensible? We all know there is scope for efficiency in local government and on the face of it, this makes financial sense. The trouble is all the focus is on finances and not on what is best for local residents and service delivery. As Resident Association councillors, your local RA councillors all believe local government is about local services for local people. This Local Government Reorganisation programme (LGR) is centralising services and making the Council more remote. SCC and the eleven districts and boroughs are to all intents and purposes being put in a giant mixing bowl to make a new cake - and how that cake will be sliced (into new Unitaries) has not yet been decided. SCC wants to cut

it two ways - East and West, with Elmbridge ending up in the East with Reigate and Banstead, Mole Valley, Tandridge and Epsom and Ewell. Eight of the Districts and Boroughs want to split it three ways, which would put Elmbridge in a North 'slice' with Spelthorne and Runnymede.

EBC (and all your local EBC councillors) support the SCC proposal. We feel being in a group with Spelthorne and Runnymede risks fundamentally changing the character of Elmbridge forever. The housing pressures on this group, all within the M25, will be enormous. In addition, Spelthorne is already in special measures because of its debt and Runnymede carries a lot of debt too. So financially prudent Elmbridge would take on a share of their debts.

The focus of the unitaries will have to be on delivering core statutory services (adult social care, education, planning, housing, waste collection and disposal etc) and there is likely to be little or no money left for the additional 'discretionary' spending that Elmbridge residents currently benefit from (six centres for the community; meals on wheels; financial support for charities; grant schemes for High Streets, cost of living and climate change; investment in our playgrounds and green spaces, to name a few).

As a result we believe the SCC proposal of an East/West split is potentially better for Elmbridge residents, placing us in a larger geographic area with greater capacity to absorb housing needs and in a group of other former boroughs and districts that are

more financially sound and have a history - like Elmbridge - of strong residents voices through Resident Association councillors. We think residents stand a better chance of not seeing our services eroded if we have two unitaries.

However, whatever our views they count for nothing! All the decision making lies with the Government. It will have to consider both proposals. There is no scope for public feedback; no chance to vote on the outcome. And the timing of all this? The plan is for the new Councillors to be elected next May to a 'shadow' Council and the existing Councils will all disappear at midnight on 30 March 2027. EBC - and your local Councillors - will all stay in place until then and keep working for you. To understand more about this, do contact any of the TD and WGRA councillors.

MOORE
By Design
professional kitchen design since 1997



Your local independent kitchen specialist offering inspiration, a truly personal service, and value for money.

Scan the QR code for our website or call 01932 379076 to start your kitchen journey

www.moorebydesign.co.uk

Dates for your diary

Farmers' Market

Mercer Close Car Park (by the library)
fourth Saturday of the month

Weston Green Litter Pickers

Meet at Marneys pub on the first
Saturday in the month at 10.30am

Thames Ditton Litter Pickers

Meet at Thames Ditton Tennis Club
car park on third Saturday of the
month at 10.45am

Seniors Coffee Morning

Every Wednesday from 10.30am
at Vital Village, Mercer Close

St Paul' Primary School

Summer Fair 13 July

Paint All Saints Appeal

Saturday 19 July, Sponsored Walk

Paint All Saints Appeal

Saturday 20 September Community
Quiz night

Thames Ditton & Weston Green Nature and Climate Festival

10-12 October

REMEMBERING
OUR LOCAL
HEROES



Flooding in Thames Ditton

- Mixed News



First the good news. As reported in the Spring edition, we have now ordered the first of the **Temporary Flood Barriers** and these should have arrived when you read this. We will then be able to order the other barriers and should have them all in place and operational by the next flooding season.

We have also applied for funding for initial Property Flood Resilience (PFR) Surveys from the Community Infrastructure Levy Fund at Elmbridge Borough Council. It seems we have a reasonably good chance of being successful, but we will not know until mid July. We will continue to liaise with Surrey County Council regarding funding for implementation of PFR, but it is not yet clear what impact the Local Government Reorganisation for Surrey will have on this.

The Environment Agency (EA) has made a major update to the flooding information on their website. <https://check-long-term-flood-risk.service.gov.uk/rivers-and-sea> It shows an updated plan of the current flood map and includes a further one for the situation for 2036 onwards, including climate change impacts. In addition, if you live in an area at risk of flooding, you can also obtain an indication of the potential depth of flood water in the area. The system for providing Flood Alerts and Flood Warnings will also be updated later in the year.

Now the mixed news. Not surprisingly, the updated flood risk maps show climate change will increase the flood risk in Thames Ditton, together with other communities, along the section of the

Thames between Molesey and Teddington locks. We have been in contact again with our MP, Monica Harding and will be meeting her to explain what the new data shows. We are also suggesting she liaises with MPs in adjacent constituencies that are affected to bring pressure on the Government to allocate funding for flood resilience measures on our stretch of the river. Our section of the Thames is the most downstream one in the River Thames Scheme and the data we have been provided with shows there will be little or no benefit to us from that scheme.

Our stretch of the River is affected by the tide during flooding conditions and the river level can rise by up to 60cm above the base flood level. The EA has another flood mitigation scheme downstream of Teddington lock called Thames Estuary 2100. This forecast shows that by the end of the century, global warming may increase the tide height by up to 1m. In addition, maintenance considerations suggest the Thames Barrier will not be able to be used to protect us from 2035 onwards. The EA recognises this is a problem and have asked the West London Communities project to investigate this. Unfortunately, funding for that has also been withdrawn as part of the Government's spending review - but we are informed the result of the review - and its impact upon us - should be clear by the summer.

Tony Thompson, Flooding Convenor



The Royal Cambridge Home

84 Hurst Road, East Molesey, Surrey KT8 9AH

A great place to live, work and visit

Founded in 1851 and having seen many changes over the years, the Home moved in 1944 from Norbiton to Hurst Road in East Molesey where the home resided for many years. Today this unique charity provides residents over 65 with a home for life in a state-of-the-art luxury care home.

The Royal Cambridge is certainly a well-known fixture in the local area but now sporting a 32-bed care home with a spectacular south facing garden. Each bedroom has a walk-in wet room and ensuite toilet. Enjoying all the benefits of life in a fabulous location in East Molesey, Surrey on the edge of the Thames and a 10-minute stroll from Hampton Court to which they are frequent visitors.

The new home also boasts a mobility scooter storage in their back garden for residents still enjoying their independence.



They have a Monday-Friday activities team who are supported by visiting professional musicians and arts and crafts specialists, which enables the Home to provide a full diary of events amidst much laughter and atmosphere. They have their own minibus which is often seen in the local area as they visit many local attractions and enjoy group lunches out at various local garden centres plus the occasional pub lunch.



The Royal Cambridge Home is a delightful place to spend your latter years, sharing good times with friends or family and enjoying plenty of activities and hobbies or simply sitting back in a comfy chair in one of their many lounges, all of which enjoy a garden view.

If you are looking for a period of respite or a permanent new home for yourself or your relative or friend then it has never been a better time to find out more about this prestigious, yet homely, independently run, not-for-profit care home in the heart of East Molesey.



Contact:

Tel: 020 8979 3788

Email: enquiries@royalcambridgehome.org

Web: www.royalcambridgehome.org

A Case for Conservation: 50 years on



Church Walk c. 1973 – view towards the spire of St Nicholas' Church

Research author and local resident, Victoria Haberfield, writes about 50 years of conservation in Thames Ditton and Weston Green.

The concept of conservation areas was introduced in England, Wales and Scotland by the Civic Amenities Act 1967, which aimed to preserve or enhance the character of areas of special architectural or historic interest. The Act came at a time of widespread public concern over the pace of redevelopment in historic towns and cities. Around 1973, the Residents' Association of Thames Ditton formulated 'A Case for Conservation' (possibly as part of the Council's public consultation), to request designation as a conservation area.



Image 2. Church Walk 2024 – view towards the spire (now largely obscured by the trees) of St Nicholas' Church

'A Case for Conservation' sought to define the character of the village and identify special architectural and historic interest. It noted in particular St Nicholas' Church, parts of which date to Norman times, and the many cottages and houses dating from the fifteenth century onwards, including many listed buildings. It referred to the harmony between the historic buildings with the Victorian and Edwardian additions and even more modern buildings to create "a satisfying whole". Despite the expansion of the original village and hamlet of Weston Green into a suburb, "there is still the environment and atmosphere of a village community". 'A Case for Conservation' included many photographs of the village

and Weston Green and concluded with the following words: “That there is something here well worth the trouble and expense of such protection the enclosed photographs are designed to show”

The Council evidently agreed that a case for conservation had been made. Thames Ditton Conservation Area and Giggs Hill Green Conservation Area were each designated by Surrey County Council in July 1973 and later extended by Elmbridge Borough Council in July 1987 and again in October 2009. Weston Green also received separate designation status. The Thames Ditton conservation area is located around the historic core of the village, including the High Street, the Churchyard and Church Walk, and the ends of Watts Road and Station Road which join the High Street.

Conservation area designation places a statutory duty on local planning authorities (in our case Elmbridge BC) to preserve and enhance the area while undertaking their planning duties. Community involvement however is essential in understanding the special nature and different issues for each conservation area. Thames Ditton and Giggs Hill Green have a Conservation Area

Advisory Committee (CAAC), made up of local volunteers which provides feedback to the council on planning applications within the conservation area, particularly whether such applications may affect the character or appearance of a conservation area. The CAAC is not however a committee of the council, and whilst a consultee, all decisions on planning applications are made by the local planning authority Elmbridge BC.

The CAAC also has a broader remit to initiate, suggest and advise on possible enhancement schemes and to help in formulating policies for the preservation and improvement of conservation areas.



South end of the High Street 2024



South end of the High Street c. 1973



The lime tree at the junction of Ashley Road and High Street c. 1973



The lime tree at the junction of Ashley Road and High Street 2024

50 year review

A little over 50 years on from 'A Case for Conservation' the Thames Ditton CAAC has undertaken a photographic review of the original submission. This involved identifying the precise location of each original photograph and comparing the view then with now. The CAAC has been pleased to note how little has changed within the conservation area in the last 50

years. The townscape of the High Street and quiet and leafy spaces along Church Walk remain largely the same, save for a few modernised shop fronts. The height of the trees is the only notable change to the views along Church Walk and into the churchyard. The many boundary walls, a remnant from the historic estates in the village and a key part of the character,

have been largely preserved. The homes of Thames Ditton, dating from the 15th century to Georgian and Victorian periods, have retained their original charm, indicating that the local planning authority has generally ensured that any alterations, repairs or extensions harmonise with and reinforce the architectural and historic character of the area.

Not all of the original views and buildings documented in the 'A Case for Conservation' were ultimately included in the conservation areas. For example, there are a number of houses of historic and architectural interest along the north east end of Weston Green (towards Thames Ditton Station) which were not included in either the Thames Ditton or Weston Green conservation areas. However many of these buildings have individual status on the National Heritage List or List of Local Buildings of Special Architectural or Historic Interest. A notable exception (which did not have the protection of listed status) is the former public house Ye Olde Harrow which, despite dating back to 1745 and being a site of historical interest, was demolished in 2013.

A few examples of the comparative photographs are shown. We hope the full photographic review will be made publicly available at the library later this year. Of the 58 original photographs, one view had been difficult to find and was featured in the Spring edition of the magazine to see if readers could assist. Our sincere thanks to the many readers who responded to advise that it was the view from Marney's Village Inn – which proved to be correct and meant the 50 year review could be completed.

If anybody has any views/ideas which they would like to share with us about the Conservation areas and the objectives behind the CAAC, please get in touch via email at tplan@elmbridge.gov.uk



The view from Marney's today



The view from Marney's in 1973 when there was a Post Office and general store in the road

Discover Thames View

Care from the heart in Thames Ditton.



Providing residential, nursing and dementia care on a permanent and short stay basis.

Thames View Care Home is a Grade II listed mansion in Thames Ditton, Surrey. An outstanding place of beauty that offers residential, nursing and specialist dementia care for elderly residents within a restored and extended 18th Century Grade II listed mansion. Our luxurious living environment is home for up to 78 residents in a unique setting of approximately 2.5 acres on the bank of the River Thames, overlooking the grounds of Hampton Court.

Comfort and wellbeing of residents

The main house boasts grand reception rooms including the magnificent first floor library and ground floor cinema room, private dining room, lounge lounge, hair salon, and nail clinic. There is a dedicated activities room with an extensive programme of events for residents' health and wellbeing. We are dedicated

to creating a home away from home where all residents are cared for with true enthusiasm and love. Our main priority is to continue to provide eventful days, to fulfil dreams in a kind and giving way, and to make sure all our residents get to embrace their personalities. Our friendly team are focused on ensuring everyone's wishes and own individual needs are met. Our passion is to provide expert care with a personal touch and to create the safest environment possible for the people living in our community.

Pastimes and mealtimes

At Thames View there is a range of pastimes whether that's social, creative or physical to encourage good mental health. We help to ensure everyone has a purpose to their day, it's their life and they choose the way they want to live it.

We understand the importance of good nutrition and hydration. Of course, dining experiences

are not only generated by the food eaten, the company and atmosphere can completely define our enjoyment. This is why we tailor the experience for everyone and welcome families and visitors to dine with us too.

Choice and independence

When it comes to individual bedrooms, we help our residents to put their unique stamp on their room and keep things just how they like them. All bedrooms are ensuite and have delightful furniture and furnishings. Our home is surrounded by beautiful landscaped gardens with several rooms having access to the gardens directly from their room.

Our bistro is perfect for socialising with family and friends and has a kitchen area for making drinks. For alone time there are quiet nooks with comfy armchairs, classic novels and books on the shelves.

Our ground floor cinema room is just the ticket for the weekly film club and our private dining room gives the space for friends and families to come together to celebrate key milestones.

Local community events

We host a range of regular events that the local community are welcome to join including our weekly coffee morning and monthly dementia friendly music session.

Whether you're looking for permanent or respite care, or would like more information about our events, please get in touch. We would be happy to give you a tour of our home and meet our team. Whatever your needs there is a place for you at Thames View.

0808 281 5107
ariacare.co.uk

**58 High Street, Thames Ditton,
Surrey KT7 0TT**



THAMES VIEW
✂ ARIA CARE



Bee Inspired
natural honey beeswax skincare

Multi award winning natural skincare handmade in Thames Ditton
Embracing the benefits of beeswax and honey from our bees, together with
carefully selected plant + essential oils we have created a comprehensive
range for all age and skin types
See website for full details or arrange to pop in www.beeinspiredcreams.buzz

FUNERAL DIRECTORS AND MEMORIAL STONEMASONS

OUR FAMILY HELPING YOUR FAMILY

For over 240 years, eight generations of the Lodge Family have been privileged to help local families in their time of need. We provide all funerals, whether modern, traditional, green or alternative, with care and compassion.

THAMES DITTON
37 High Street 020 8398 4586
Branches also in Esher, Molesey & Surbiton
www.lodgebrothers.co.uk



Robert, Chris & Andrew Lodge

 **Trustpilot** 
5.0 Excellent as of 01/25

"An excellent service providing a compassionate funeral for our father. Lodge Brothers exceeded our expectations and demonstrated a depth of care that one would show to their own family."
- J. Luxton

 **Lodge**
BROTHERS 1780
the family you can turn to

ASK ABOUT OUR
PRE-PAYMENT
FUNERAL PLANS

FLORAL TRIBUTES • FUNERAL PLANS • WILLS & PROBATE

Paint All Saints Appeal....Update



All Saints Church

The ‘White Church’ appeal, launched in January, has already raised £60,000 towards the target of £100k to repair the fabric of the landmark building in Weston Green and repaint the church white. However, while this is hugely encouraging, a potential problem has arisen.

The Government has announced that it is to end the Listed Places of Worship Grants Scheme (LPWGS) which allows listed places of worship of all faiths across the UK to reclaim the VAT they pay on repairs. It's been a lifeline for historic churches allowing them to be better able to afford costly yet essential repairs. But with the scheme expected to end in March 2026, many heritage and church buildings across the country will be at risk of disrepair and closure.

We are grateful to our MP Monica Harding who has been pushing the Government to renew the LPWGS scheme on behalf of all listed places of worship in the Esher and Walton constituency and her letter to Sir

Chris Bryant MP highlights the potential impact of what will happen when the Scheme ends.

The proposed ending of the scheme has had an immediate impact on the project to Paint All Saints. The work was planned to start in March 2026 but it now seems imperative to do everything possible to undertake the project much earlier, before the hefty VAT charges are imposed. So the work is now scheduled to start in July with completion by the end of October.

Fundraising for the Appeal will be even more crucial over the next few weeks and months to try and get as close to the target as possible. The good news is that thanks to the generosity of the local community, some significant donations and legacies and fantastic support for the programme of events, £60,000 has already been raised.



All Saints damage



VISIT our
showroom
or **CALL**
to arrange
a visit to
your
home



SCAN ME

...FOR THE LATEST
Casement Windows,
Sliding Sash Windows,
Composite Entrance Doors,
Bi-Fold Doors, Sliding Patio Doors
& Lantern Roofs

6-7 Grand Parade
Ewell Road,
Tolworth, Surbiton
Surrey KT6 7BE

WARMLITE
Clearly Quality

www.warmlite.co.uk Tel: 020 8399 3377

Thank you to everyone who has already made a donation or been to one of the Paint All Saints events. To date we have seen great audiences at the Organ Recital, Back to Broadway, the Easter Egg trail, the Archive Morning, our wonderful White Flower Festival and plant sale and as we go to print we are looking forward to Ember Big Band: 'Remembering Weston's War'.

But your help is still urgently needed to try and raise the final £40,000 – any donation, no matter how small, is gratefully received. If you can, please donate using the QR code or via the website www.allsaintsweston.com or sponsor the fundraising walk taking place on Saturday 19 July. Events will continue as planned through the year and a full list of these is on the website.



Events coming up

- **Saturday 19 July** - Sponsored Walk
www.justgiving.com/page/all-saints-weston-green-1
- **Wednesday 30 July** (revised date)
2.30-3.30 Trumpet Recital.
Free entry (donations welcome)
- **Saturday 20 September 7pm**
- Community Quiz Night -
tables of 8. Price £10pp. Booking at
office@allsaintsweston.com
- **Saturday 15 November 2.30**
Hampton Court/Weston Green
History Talk
- **Saturday 6 December 7pm**
- The Whyte Effect Christmas
Choral Concert



Paint All Saints



Target £40,000

Loving God | Building Community | Sharing Jesus



More than just a house move

Buying or selling a property is more than just a transaction - it's a milestone, a new chapter, an investment. That's why you need legal experts who can ensure a smooth and stress-free journey.

- Residential conveyancing
- Lease extensions
- Leasehold enfranchisement
- Remortgaging
- Equity release
- Shared ownership
- Buy to let
- Auctions

owenwhitecatlin.co.uk

01372 469 100
contact@owc.co.uk

Addlestone. Ashford.
Hammersmith & Chiswick.
Esher. Feltham. Shepperton.



Ember Bowls Club is 75 Years old!



Pat Cooke traces the history of Ember Bowls Club to the present day.



Ember Bowls winners

In the early 1930s London businessman George Gale's company (known as G E Gale) developed land known as the Pound Farm Estate near Imber Court. However it decided houses would not be built on land bordered by Ember Lane, The Drive and Grove Way. Instead, tennis courts and a wooden clubhouse with a veranda were put in place. During WW2 this building was used by the Army. After the war, George's son Kenneth (Breeze) Gale and his family were living in a house in Ember Lane which backed onto the site. They were involved in establishing The Ember Lane Tennis Club which eventually became Ember Sports Club. Soon a drama group formed by the members and to be known as The Ember Players made it their base. Later bowls and croquet were added to the sports on offer. George Gale's granddaughter, Gillian Beaney, still lives locally and has been

involved with Ember Sports Club since 1945, mainly with The Ember Players.

The bowling green is built

In 1949 the bowling green began to be built. Another member since childhood, Roger Fayers, joined the club when he was eight and still plays tennis at Ember. He can remember his father's allotment near their house in Grove Way, being dug up and the bowling green put in its place. This led to Ember Bowls Club being established in 1950, making 2025 its 75th Anniversary.

It was quickly a thriving club and the inaugural internal competitions were held in 1951 competing for the ladies Dussek Cup and the men's Lewis Cup. Since then certain names have appeared multiple times on each cup as Ember produced some very successful bowlers. In 1953, the year of Queen Elizabeth II's coronation, Ember

HAMPTON HILL WINDOWS

ESTABLISHED INDEPENDENT SPECIALISTS
FOR OVER 25 YEARS



- uPVC Windows, Doors and Porches
- Composite Doors
- Friendly Service
- References on request
- 10 year Insurance Backed Guarantee
- No deposit required



2 New Broadway, Hampton Road, Hampton Hill.

Tel 020 8977 1822

email: rsupvc@gmail.com

www.hamptonhillwindows.com

invited teams from neighbouring clubs to compete in a Sunday morning knock-out competition for the Coronation Cup. This was played for 73 years until changes in the way people spend their Sunday mornings sadly forced it to end.

Bowls is a sport for all, so it is not surprising that Ember has playing members in their 80s and 90s who compete on the green against players still in their 40s. The oldest playing member, Jerry Ingham, has been Singles Champion four times since 1978 – most recently in 2015. His son, David, was also a young champion four times back in the 1970s and 80s.

But it is not all about winning singles championships! Bowls is very much a team sport and can be played in teams of two, three or four. Ember plays around thirty friendly matches against other local bowls clubs each season. The green opens in April and closes for the winter in mid-September. There are internal and external leagues and Ember also enters teams to play in North West Surrey and Surrey County knock-out competitions. The club runs its own knock-out competitions which culminate in Finals Weekend in early September. This is a great occasion with players and spectators enjoying two days of competitive bowling for as many as twenty trophies, still including the Dussek and Lewis Cups.

Ember is hugely proud that in recognition of outstanding service to the sport of bowls in Surrey, three current male members hold the Surrey Leopard Award - Jerry Ingham, Ken Homewood and Peter Collins – while Jenny Baird holds the Loyal Service Award for women.

Aside from matches and competitions, members enjoy less competitive games with roll-ups and ever popular Monday Club Nights which often finish up with a fish and chip supper. There are regular Bank



Ember Bowls players in first year

Holiday and weekend special events with lots of variations on the game like Bowls Cricket or Australian Pairs. The club motto 'Horae Subsecivae' means 'The Leisure Hours' and they are well filled!

Celebrating the birthday ...

Ember has lots of exciting events to celebrate its 75th birthday. Special commemorative pens are being given to every member and to visitors from other clubs, throughout the season. To celebrate, the club's sponsor, Leightons Opticians and Hearing Care, has provided a trophy for a new competition for teams of three. There will also be matches against an Area 2 Surrey team and a Surrey Presidents' team. The two current club champions are both from South Africa and Mount Edgemont Bowling Club (South Africa) is also paying a visit during this special year.

The future....New members are always welcome and Ember introduces people to the sport of bowls every year by offering free beginners lessons during May and continues to support and encourage all to enjoy the game. The club looks forward to celebrating many more anniversaries. Visit embersportsclub.org.uk for further information about Ember Bowls.

LKA CHARTERED ACCOUNTANTS

AWARD WINNING ACCOUNTANTS IN THE HEART OF THAMES DITTON

Winners of the Small Firm of the Year (South of England) category at the 2023 Accounting Excellence Awards, LKA's expert team of Chartered Accountants and Chartered Tax Advisors have been supporting local residents with their accountancy and tax needs for over 10 years.

Renowned for our focus on client care, our multi-award winning team provides professional, proactive, tailored support to private individuals and small to medium-sized businesses with all aspects of accounting and tax, from advice and planning to tax returns.

If you are looking for a friendly team of Chartered Accountants and Chartered Tax Advisors, why not pop in and see us, or call us on **020 3915 8585** to book in for a FREE 15 minute discovery call.



Thames Ditton Office
2A High Street
Thames Ditton
Surrey, KT7 0RY

Teddington Office
Unit 8 Engine Shed Yard
23 Waldegrave Road
Teddington, TW11 8LA

0203 915 8585
www.lkassociates.co.uk

TD
IMMIGRATION
SOLUTIONS

UK IMMIGRATION EXPERTISE

For Families, Professionals and Business

TD Immigration Solutions provide high-quality legal support for individuals, families, and businesses navigating the UK's immigration system.

We assist with:

- Family and personal immigration
- Skilled Worker & Sponsor Licence for employers
- Student & Graduate Visas
- British Citizenship and Settlement

Contact us to book a consultation:

www.tdimmigration.co.uk
info@tdimmigration.co.uk
07501614168

We speak English, Russian and French

**JET-WASH
JEFF**
RESIDENTIAL
DOMESTIC
COMMERCIAL

- PATIOS
- PATHS
- STEPS
- DRIVEWAYS
- WALLS
...and more

**Call us and we'll pop
around to give you a
quote - no obligation**



CALL 07905556706
jr48@hotmail.co.uk

Meet Your Distributors

- Lesley Haynes



Your copy of Thames Ditton Today was delivered by one of our team of loyal distributors. Let's meet one of them, Lesley Haynes who delivers to Onslow Gardens, Onslow Close and Onslow Way, as well as shops and businesses in Thames Ditton High Street.

How did you become a distributor?

My husband, Peter, was already involved with the Residents Association, as Membership Secretary. He also co-ordinates the distribution of TD Today, so I was happy to deliver magazines when the need arose.

How and when did you start living in Weston Green?

Peter and I moved here in 1989. We both worked in London, but we also wanted easy access to rail networks and the countryside. We are now the second longest residents of Onslow Gardens.

A brief 'potted biography'?

I was born and educated in Edinburgh. I trained as a dietitian at Queen Margaret University in Edinburgh. After a stint in general dietetics, I spent 10 years as a paediatric dietitian at Alder Hey Children's Hospital in Liverpool, leaving there to travel for a year with Peter. Then I worked for over 20 years at Great Ormond Street Hospital. I was so lucky to be part of a specialist dermatology team dealing with a rare inherited skin disease, which also affects the child's mouth and gut. This needs expert nutritional support and our collective experience involved publication of research papers and overseas lecture tours. I stayed in the NHS for my whole career.



Lesley Haynes

A 'Sliding Doors' Moment

In 1986 I went on a skiing chalet holiday to Italy with two girlfriends. On arrival we were moved to a different chalet to the one we booked. Meanwhile Peter, who is Australian but had moved to London to work as a petroleum geologist, had extended his skiing holiday in the same chalet for an extra week. When we arrived, he was there in reception and we thought he was a 'chalet boy'. He was not checking us in but 'checking out' the new female arrivals! Neither of us should have been in that chalet that week. We 'clicked' on the slopes and during time in Venice waiting for our flight home, and kept in touch afterwards. After a couple of years in a Liverpool-London relationship, we gave up our jobs and travelled overseas for a year before settling in Weston Green.

Hobbies and activities?

Crafting - I love making patchwork and quilting, bunting etc and sell at the weekly

Time to tidy your pension pots?

To find out more about self invested personal pensions, pension transfers, pension consolidations and more, email esher@killik.com.

KILLIK & Co

Save | Plan | Invest



The value of your investments may go down as well as up.

Hersham Village Market. I also bake for the Market's big food section. Peter and I have twice opened our garden as a 'Secret Garden of Weston Green' and I belong to Esher and Molesey Garden Society. I love entering plants and baking in their annual show - I'm very competitive! In 2023, I was delighted that my quilt won first prize at the Esher West End Village Show. Peter and I are leaders of an Elmbridge U3A Petanque group in Shepperton. For me, ParkFit in Bushy Park, 2-3 times a week, is a great work out in the open air and in all weathers. We walk 9-10 km with friends every couple of months. We both have a love of word games – cryptic crosswords, Wordle and Connections - and quizzes.

What other volunteering do you do?

I drive for NeighbourCare, a charitable organisation of volunteers who drive residents of Long Ditton, Thames Ditton, Weston Green and Hinchley Wood to medical appointments - we always need new volunteers! And I deliver Meals On Wheels twice a month.

Eat In or Eat Out?

In - with friends. Dietitians love feeding people!

Vacation or Staycation?

Both. We enjoy travelling and Peter has family in Australia but I also don't like leaving the garden for too long!

Cinema or Theatre?

Both, now and again. We enjoy going to the Vera Fletcher Hall's productions.

Not a lot of people know that?

If my Austrian grandfather hadn't changed his surname during the First World War, my maiden name would have been Feichtinger. A nightmare to spell for many.

Music Lessons Esher and Thames Ditton Based in Lower Green. Lessons in Person or Online (Skype)



***Would you like to play piano?
Write your own songs? - or play flute?***

**Perhaps you want to learn some music with
your friends - or on your own.**

Why not give it a try?

**07722574625
colleenmuriel@hotmail.com.**

elflauto.ca

Karen's Angels

The All Needs Carers



Karen's Angels is a friendly local care company, operating in Surrey.

We provide professional 24 hour care, social and personal care services.

We are very proud of the excellent reputation we continue to achieve with our customers, their families, local authorities, GP's and DN's.

For further information please contact

**Karen/Andrea
02082247848
07760220604**



West Hall
carehome.co.uk
score*

*carehome.co.uk review scores are based on independent reviews with a maximum score of 10. Review quoted and rating correct as of 13/05/2025.

Dated June 2019

Outstanding ☆



“The beautiful grounds, lovely food and services on offer were all I could have asked for..”

West Hall relative quote.

In a recent survey of all our care homes, when asked if
'Staff treat them with kindness, dignity and respect',
98.2% of family and friends agreed.

West Hall

WEST BYFLEET | SURREY

Considering care? We're only a friendly
call away 01932 911 729
or visit www.WestHall.org.uk

West Hall luxury care home
Off Parvis Road, West Byfleet KT14 6EY

CARPETS4U

NUMBER 1 MOBILE CARPET SHOWROOM



Epsom based, friendly, Father & Daughter family run business, established for over 25 years.

We bring 100's of carpet samples to your home with no obligation all at competitive prices.

Call us today to arrange a completely FREE estimate

CALL
Holly

01372 632 118

www.carpets4u.co.uk

10% DISCOUNT
ON PRESENTATION
OF THIS ADVERT

SPECIAL RATES
FOR SENIOR CITIZENS T&Cs APPLY



Over 1,800 Customer Reviews

Proud members of
Checkatrade.com
Where reputation matters



FREE FITTING & FURNITURE MOVING - ESTIMATES AND ADVICE

| | | | | | | | | | | | | | | | | | |
|----|---|----|---|---|---|---|---|----|---|----|---|---|---|---|---|----|---|
| 1 | O | 2 | S | 3 | I | 4 | D | 5 | P | 6 | A | 7 | R | 8 | I | E | S |
| B | H | T | N | | | | | O | E | T | T | | | | | | |
| 9 | S | T | R | E | E | T | S | 10 | S | W | A | N | S | E | A | | |
| E | | E | | M | | | | U | I | D | N | | | | | | |
| 11 | S | T | E | P | O | V | E | 12 | R | T | H | E | L | I | N | E | |
| S | | F | | N | | | | | | | R | | C | | | S | |
| | | 13 | C | A | S | E | D | I | S | M | I | S | S | E | D | | |
| | | | C | | | | | | | T | | | | | T | | |
| | | 14 | R | E | U | N | I | F | I | C | A | T | I | O | N | | |
| 17 | B | | S | | O | | N | | | | H | | B | | | 18 | S |
| 19 | I | D | O | N | T | F | E | 20 | E | L | L | I | K | E | I | T | |
| | C | | F | | A | | D | | | A | | | H | | A | | |
| 22 | E | V | E | N | I | N | G | 23 | S | T | A | M | E | N | S | | |
| P | | V | | R | | | | | | T | | I | | R | | | |
| 24 | S | T | E | R | E | O | S | | | | | | | | | | |
| | | | | | | | | | | 25 | S | C | R | E | E | N | S |



Men's Pit Stop
SURREY

Don't carry the weight of whats keeping you down.Come and have a chat about it at Men's Pit Stop. Peer to peer support.

Starting 15th April 2025

Confidential group support every Tuesday
7pm to 8pm

Please call or text Blair for further
information 07815556320
blair.parrott@surreycc.gov.uk

Vital Village Community Hub
Mercer Close, Thames Ditton
Surrey KT7 OBS

VITAL VILLAGE
COMMUNITY HUB



VITAL VILLAGE

Starting 4th May 2025

Join us for

TEA & TOGETHERNESS

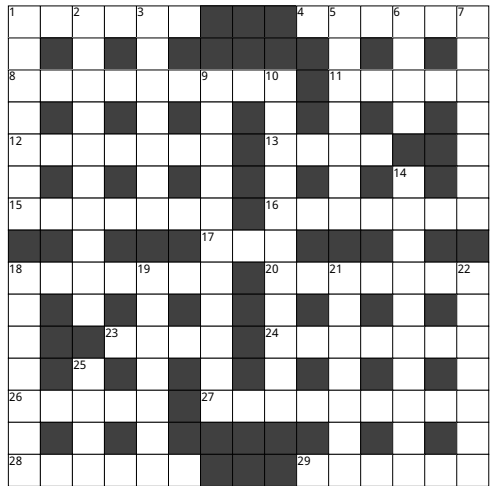
Every first Sunday of the month
3pm-5pm
Vital Village Hub
Mercer Close KT7 0BS

RSVP
07311 324 982

Summer Crossword



By Andy Howarth



The first three correct entries randomly opened after the closing date of 1 August 2025 will win a £5 voucher to spend in local shops.

Please send the completed puzzle (or photocopy) enclosing your name and address with the envelope clearly marked 'Crossword Competition' to:
Thames Ditton Today
Crossword Competition
24 High Street, Thames Ditton KT7 0RY
Names of the winners will be published in the Autumn edition, unless otherwise requested.

ACROSS

- 1 & 8A Legendary slaying leads to TD pub (6,3,6)
- 4 Our old MP comes back with a map to Middle Eastern market (6)
- 8 See 1A
- 11 One regularly won by Paull's Fruit & Veg (5)
- 12 State of ill temper (2,1,4)
- 13 Slain by Cain (4)
- 15 Nickname of Luton Town FC (7)
- 16 Ascertain change to rescind (7)
- 17 & 28A Scottish pub in TD? (3,6)
- 18 German street (7)
- 20 Disorderly barbels become unruly mobs (7)
- 23 _ California, a Mexican state (4)
- 24 Incandescent person? (7)
- 26 Healed grazes (5)
- 27 "That's my holiday time" (3,2,4)
- 28 see 17A
- 29 Finns are fond of them (6)

DOWN

- 1 Lecherous billy?
- 2 Dab hands at painting? (3,7)
- 3 Relevant (7)
- 5 Plants of the rhododendron family (7)
- 6 Boy comes back from Bridge Road deli (4)
- 7 Most common pub in Britain (3,4)
- 9 There's no doubt about this singer? (4,7)
- 10 Ancient person from broken NE heartland (11)
- 14 TD pub that dates back to the 13th century (2,4,4)
- 18 Historical region of Europe lying mostly in Poland (7)
- 19 American actress from the 20s to the 70s (7)
- 21 Master artist's studio (Italian) (7)
- 22 Basset hounds are said to have these (3,4)
- 25 Hook a fish without the Spanish (4)

SERVICES, CLUBS, SOCIETIES AND GROUPS

SERVICES

| | | |
|---------------------------------------------------------------------------------------------|----------------------------------------|------------------------------------------------------|
| Cheer (Concern and Help for East Elmbridge Retired) | General Enquiries: | 07895 762100 (Mon-Wed) www.cheer-elmbridge.org.uk |
| Dittons & Weston Green NeighbourCare | Frankie Bell | 07790 472993 |
| Elmbridge Borough Council Community Support Services | | |
| Thames Ditton Centre for the community | Mon & Thurs | 0208 3985921 |
| Thames Ditton Dementia Centre | Nikki Harding | 01372 474526 |
| Meals on Wheels, Community Transport, Dial-a-Ride, Alarm & Telecare services, Relief Carers | ask for service at central switchboard | 01372 474552 |
| Esher and District Stroke Club | Ann Pollock | 0208398 6132 |
| Voluntary Action Elmbridge | Sally Dubery | 01372 463587 |
| Surrey Youth and Adult Education Service | Elmbridge Area | 020 8979 8334 |

GROUPS

| | | |
|-----------------------------------------------|---------------------------|-------------------------------------|
| 1st Thames Ditton Brownies | Vanessa Corby | 1stThamesDittonBrownies@gmail.com |
| 3rd Thames Ditton Brownies | Emily Wattret | 3rdthamesdittonbrownies@gmail.com |
| 1st Weston Green (All Saints) Scout Group | | membership@westongreenscouts.org.uk |
| 1st Weston Green Guides | Sumathi Jeevaratnam | sumathi.jeevaratnam@gmail.com |
| 2nd Weston Green Guides | | 2wgguides@gmail.com |
| 2nd Thames Ditton Guides | Vanessa Corby | 2ndThamesDittonGuides@gmail.com |
| 1st Weston Green Brownies (All Saints) | | 1wgbrownies@gmail.com |
| 3rd Weston Green Brownies | | 3wgbrownies@gmail.com |
| 1st Weston Green Rainbows | Lizzie Owen | westongreenrainbows@gmail.com |
| 4th Thames Ditton Ajax Sea Scouts | Chris West | chris.west@ajax.org.uk |
| Dittons Scout Group | Stuart Jack | 07971 479740 |
| Emberbrook Trefoil Guild | Mary Bowen | 020 8398 6857 |
| Friends of Bushey and Home Parks | Jean Smith | 020 8977 9391 |
| Girlguiding in Thames Ditton and Weston Green | | dittonsdistrict.hjh@gmail.com |
| Molesey and Dittons Neighbourhood Watch | Chairman: John Haberfield | 020 8398 5256 |
| Parents and Toddlers(St Nicholas church) | Information | 020 8398 7211 |
| Ripieno Choir | Nick Harris | 020 8399 7231 |
| Surrey Bell-ringers | Giles Andre | 020 8979 1994 |
| Bereavement Café | St Nicholas Church Hall | 020 8398 9641 |
| Thames Tots (Kings Church, Speer Road) | Abby Kelly | Office@Kingschurch.com |

CLUBS

| | | |
|----------------------------------------------|-------------------|--------------------------------------|
| Albany Motor Yacht Club | Secretary | 01784466651 |
| All Saints Weston Lunch Club | Alison Cruthers | 07957 347170 |
| Archery: Rivernook Bowmen | Nigel Harris | secretary@rivernookbowmen.co.uk |
| Arts and Heritage Club | Carol Butcher | 01932 867511 |
| Cercle Francais d'Esher | Brigitte Tiller | 01932 860842 brigitte@ptiller.com |
| Claygate Bridge Club | Hon. Secretary | 020 8398 1710 |
| Colets Health & Fitness | info@colets.co.uk | 020 8398 7108 |
| Ditton Bridge Club | John Dagnall | 02083984463 |
| Dittons Skiff and Punting Club | Secretary | enquiries@dittons.org.uk |
| Dittons & Hinchley Wood Royal British Legion | Hon Secretary | 020 8398 6263 |
| Ember Players (Drama) Ember Sports Club | Anne Segal | 07712 778357 |

| | | |
|---------------------------------------------|--------------------------|----------------------------------|
| Ember Sports Club | Caroline Anderson | secretary@embersportsclub.org.uk |
| Ember Sports Club: Bowls | Sylvia Jones | 01932 788701 |
| Ember Sports Club: Croquet | Simon Charrington | 07917 017453 |
| Ember Sports Club: Tennis | Annabel Duncan | 0208 786 6318 |
| English Folk Dancing Club (Thames Ditton) | Jane Ford | 07857 826668 |
| Esher Bowling Club | Roger Cooper | 01372 468109 |
| Esher Bridge Centre | Paul Whicker | 01372 460157 |
| Long Ditton Cricket Club | Nigel Hardy | 020 8398 8361 |
| Long Ditton Garden Club | Sarah Cobb | 07766 742370 |
| Model Railway Society (Hampton Court) | Secretary | 01932 241224 |
| Old Cranleigh Rugby Club | Piers Cushing | 07790 003731 |
| Old Cranleigh Hockey Club | Simon Marshall (Men) | 07801 737695 |
| | Helen Hawes (Ladies) | 07771 557900 |
| Probus Club, Hinchley Wood & the Dittons | Edmund Woolley | 020 8398 3581 |
| Probus Club, Sandown | Julian Rye | 01932 976994 |
| Probus Club of Molesey | Martin Gibson | moleprobus@gmail.com |
| Probus Club of Claremont | George Cameron | 020 8224 1392 |
| River Club (BMYC) | David Walker | 0870 460 3586 |
| Surbiton Croquet Club | Alec Thomas | 020 8398 2391 |
| Stragglers Running Club | Andy Howarth | 07941 242348 |
| Surbiton Golf Club | Secretary | 0208 398 3101 |
| Surbiton Hockey Club | Secretary | 020 8398 2401 |
| Thames Ditton Lawn Tennis Club | Steve Aukett | secretary@tdltc.com |
| Thames Ditton & Esher Golf Club | Mark Rodbard | 020 8398 1551 |
| Thames Ditton Squash Club (Colets) | Neal Brooker | 020 8398 7108 |
| Thames Ditton Cricket Club | Geoff Dryden | 07813 805 645 |
| | Geoff.Dryden@hotmail.com | |
| Thames Sailing Club | Mark Laity | 07515 101056 |

SOCIETIES AND ASSOCIATIONS

| | | |
|------------------------------------------|--------------------------|---------------|
| Civil Service Pensioners' Alliance | Mrs Brenda Denby | 0208 398 6054 |
| Ember Choral | Linda Bridges | 020 8399 5402 |
| Esher and Molesey Garden Society | Jean Billett | 01372 465961 |
| Esher and District Amnesty International | Cherry Eddy (Campaigns) | 0208 398 4377 |
| Hampton Court Way Allotment Association | Lettings: Piotr Hennig | 020 8398 5358 |
| Long Ditton Youth Club | Toni Izard | 07749 633973 |
| Lynwood Allotment Society | Gill Vickers | 020 8398 4870 |
| Molesey and District Antiques Society | Linda Lambert | 020 8398 1476 |
| NADFAS (Decorative & Fine Arts) Kingston | Mrs. Valerie Windsor | 020 8549 9967 |
| Oxshott & Cobham Music Society | Cherry Eddy (Membership) | 0208 398 4377 |
| | cherryeddy102@gmail.com | |
| Soroptimist Women | Jean Smith | 07770 417814 |
| Thames Ditton Women's Institute (W.I.) | Secretary | 020 8398 8615 |

OTHER

| | | |
|---------------------------------------------------|------------------------|--------------------|
| Vera Fletcher Hall | Lettings: Alison Black | 08456 528 529 |
| Vital Village | Lettings: Laura Pring | 07511 524982 |
| Weston Green Conservation Area Advisory Committee | | wgcaac@outlook.com |

Please contact the Editor to amend these listings

NATURE & CLIMATE FESTIVAL

A horizontal banner with a green background. It features two stylized bees on the left and right, two white swans in the center facing each other, and two stylized trees on the far left and right. There are also small white flower-like shapes.

The Thames Ditton & Weston Green Nature & Climate Festival is back for a fourth year, from Friday 10th to Sunday 12th October.

Combining family fun, entertainment, hands-on activities and learning opportunities, there is something for everyone to enjoy and most of it is free!

Events to look forward to include: A children's litter pick with the Tap Dancing Pigeon of Covent Garden; Create a Creature workshops with the David Shepherd Wildlife Foundation; a Foraging Walk; Garden Plants for Health & Wellbeing (in association with Squires); the launch of our Festival book 'Live Life Better - a handbook for sustainable living'; a new recycling station at Vital Village for hard-to-recycle items; a river clean up on the Thames; a pop-up Repair Cafe; a Binterrogation family game and more!

Follow us on Instagram @TDClimatenaturefest and X @TDNature or check the RA website for updates.

Programme may be subject to change. The Nature & Climate Festival is supported by the TD & WG Residents Association and HJC Estate Agents.





NOW OPEN!



A NEW PUB FOR THAMES DITTON

We'd love to welcome you to Thames Ditton's new and improved beer and food destination, The Red Lion.

We'll be serving an ever changing range of independently brewed beer and cider, small batch spirits, a premium wine list and freshly prepared food.

Pop in for a pint and a bite to eat soon!

The Red Lion – 85 High Street, Thames Ditton KT7 0SF
www.redlionthamesditton.co.uk

BIG SMOKE
BREW CO. LTD



Experience exceptional elderly care, tailored just for you.

At Visiting Angels, we redefine luxury in elderly care. We understand that your loved one deserves nothing but the best, and that's exactly what we deliver. Our dedicated Angels are not just caregivers; they're companions who will provide the level of care and attention your family member truly deserves.

Visiting Angels are skilled to provide:

- * Companionship
- * Personal care
- * Post-hospital stay care
- * Dementia & Alzheimer's care
- * Palliative care & more



Visiting Angels North Surrey
Call 0203 143 4007
northsurrey@visiting-angels.co.uk

VisitingAngels® 
QUALITY AT HOME CARE