

THAMES DITTON TODAY

THAMES DITTON • WESTON GREEN • EAST MOLESEY



THAMES DITTON TODAY IS THE MAGAZINE OF THE
THAMES DITTON & WESTON GREEN RESIDENTS' ASSOCIATION

A U T U M N 2 0 2 3

St Nicholas Road | Thames Ditton | KT7 0PW

COLETS

HEALTH & FITNESS



ENQUIRE TODAY!



**25m pool
with easy access
stairs & spa**

**150+ classes for all ages
and abilities**

**Pay-as-you-go
membership for 65+**

**2-storey gym, 6 squash
courts & treatment rooms**

**Crèche, Junior sessions
and so much more!**

**The independent,
community-based,
not-for-profit health club
in Thames Ditton**

**0208 398 7108
INFO@COLETS.CO.UK**





THAMES DITTON TODAY

Published quarterly since 1970

Editorial Team

Libby MacIntyre & Sandra Dennis
editor@residents-association.com

Magazine Design

Guy Holman
14 Hayward Road, KT7 0BE
020 8398 1770

Distribution

David Youd
6 Riversdale Road
Thames Ditton KT7 0QL
020 8398 3216

Advertisement Manager

Verity Park
20 Portsmouth Avenue
Thames Ditton KT7 0RT
020 8398 5926

Contributors

You are welcome to submit articles or images. Please contact the Editorial Team well in advance of the next deadline October 25

Advertisers

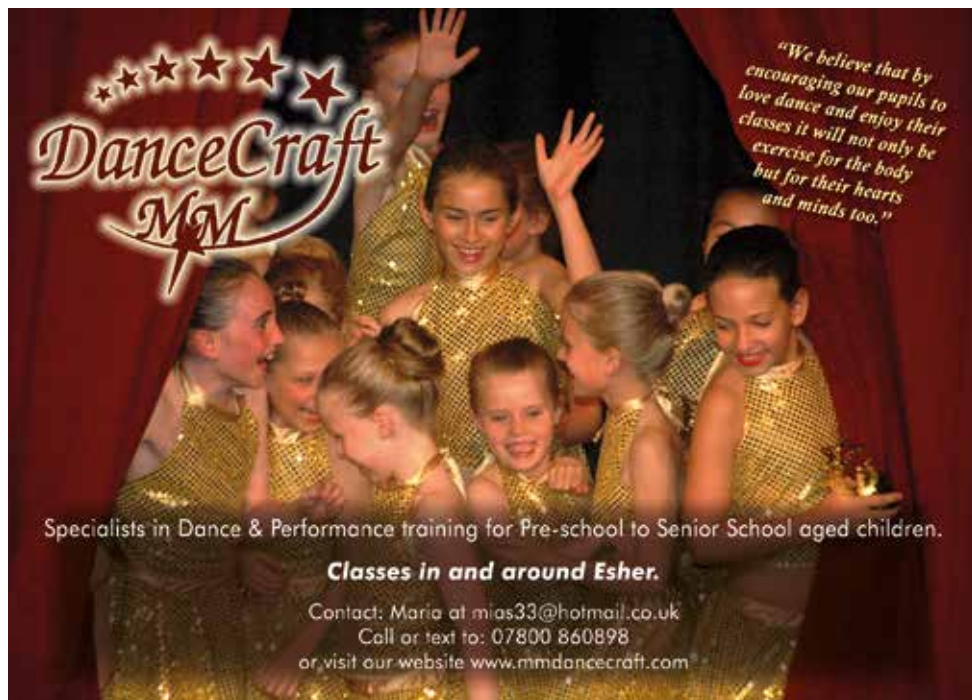
Thames Ditton Today is delivered to an influential 5000 households throughout Thames Ditton, Weston Green and East Molesey. Contact Verity Park for rates for full page, half and quarter page advertising.

In this Issue:

News from the Residents' Association	7
Update from your Residents' Associations' Councillors at Elmbridge Borough Council	12
Update from Nick Darby, Surrey County Councillor	15
Ajax Sea Scouts – 75 years and counting	17
The Aldi story	19
Nature Climate Festival 2023	23
Do you know your flood risk?	27
Secret Gardens 2023 ... a day of two halves	29
Take the Jump	31
Memories from a long life living in Thames Ditton	33
The Molesey & District Antiques Society (MADAS) returns	35
King's Church at the former United Reform Church building	37
Summer crossword solution	42
Autumn crossword	43
Services, Clubs, Societies and Groups	44
Theatre in Thames Ditton	46
Cover: Rutting Red Deer Stag by Paul Furner	

www.residents-association.com

Officers and staff of the Association are volunteers, but we must fund costs of this magazine, administrative and election expenses, and other expenses such as spring bulb-planting and village Christmas trees. The subscription is only £5 per household. If you can contribute more, please do so. Subscriptions can be paid via our website www.residents-association.com; subscriptions (in an envelope please) may be left at Boots Pharmacy, 14 High Street, Thames Ditton or Thorkhill Road Pharmacy, 94 Thorkhill Road, Thames Ditton. Or mail to Membership Secretary Peter Haynes at 6 Onslow Gardens, Thames Ditton KT7 0JJ. Thank you.



DanceCraft
M&M

"We believe that by encouraging our pupils to love dance and enjoy their classes it will not only be exercise for the body but for their hearts and minds too."

Specialists in Dance & Performance training for Pre-school to Senior School aged children.

Classes in and around Esher.

Contact: Maria at mias33@hotmail.co.uk
Call or text to: 07800 860898
or visit our website www.mmdancecraft.com

PAINTERS & DECORATORS

We are residential painters and decorators with 20 years experience, we offer wallpapering, painting and paint effects for internal and external decorating

We work in a clean and efficient manner, causing minimal disruption in your home and come highly recommended



Contact Clive Hogg
to discuss your
decorating needs

020 8339 0712

m: 07957 582296

e: clive.hogg.ch@gmail.com

15 Hampton Court Avenue, East Molesey, Surrey, KT8 0BG



THE Green OUTDOORS

TREE CUTTING / PRUNING
HEDGE CUTTING
GARDEN SERVICES & CLEARANCE
TREE PLANTING / STUMP REMOVAL
PRESSURE WASHING
& MORE

CALL 07745145433
--- Free Quote & Advice ---



THAMES DITTON AND WESTON GREEN RESIDENTS' ASSOCIATION

About the Association

Founded in 1934 our Association is a strong, locally based non-party-political organisation concerned with protecting the amenities and furthering the interests of residents.

We work to preserve and enhance the best in our attractive environment and the quality of life of everyone in our community.

Through regular meetings, social activities, our magazine and website we keep in touch with residents' views and we raise and spend funds for the benefit of the community, from tree and bulb planting to contesting unacceptable development projects.

With six Residents' Councillors covering the two electoral wards we have a strong voice on Elmbridge Council working with other Residents' Councillors to ensure that decisions are based on the needs of local communities and on good management rather than on party politics.

Our Residents' County Councillor, Nick Darby, represents our views at Surrey County Council.

President: Martin Wilberforce

7 River Avenue,
Thames Ditton 020 8398 4732

Vice President: Ruth Lyon,

11 Riversdale Road,
Thames Ditton 0208 398 3396

Vice President Tannia Shipley,

27 Lower Green Road, Esher 020 8398 2484

Surrey County Councillor: Nick Darby,

12 Basing Close, Thames Ditton 020 8398 2382

Thames Ditton Borough Councillors

Alex Batchelor,
12 Hayward Road,
Thames Ditton 07710 943140

Caroline James,
Laurel Cottage, 20 High Street,
Thames Ditton 07970 672723

Elaine Sesemann,
14 Ennismore Gardens
Thames Ditton 07801 943392

Hinchley Wood & Weston Green Borough Councillors

Gill Coates,
The Oaks, Orchard Gate,
Esher 020 8873 3040

Janet Turner, 2 Montgomery Ave,
Hinchley Wood 020 8398 1565

James Crawshaw 07500 688632

Officers

Chair: Graham Cooke
23 Ashley Road, Thames Ditton 020 8398 8509

Vice-Chair: Libby MacIntyre
24 High Street, Thames Ditton 020 8398 5534

Hon. Treasurer: Christa Silverthorne
62 Thorkhill Road, Thames Ditton 020 8398 7101

Hon. Secretary: Florian Traub,
33 Portsmouth Avenue, Thames Ditton 020 8224 2880

Membership Secretary: Peter Haynes
6 Onslow Gardens, Thames Ditton 020 8398 6019

Conveners of Sub-Committees

Health and Community: Karen Randolph
Deepfield, Giggs Hill Road,
Thames Ditton 020 8398 5005

Planning: Rhodri Richards,
Ditton Cottage, Giggs Hill Road,
Thames Ditton 020 8398 4962

Highways, Drainage: Andrew Roberts,
1 Boyle Farm Road, Thames Ditton 020 8786 6882

Flooding: Tony Thompson,
Willow End, River Bank, Thames Ditton 07736 677671



THE NEXT RESIDENTS' ASSOCIATION OPEN MEETINGS ARE

Tuesday 3 October 8pm - Vera Fletcher Hall

Tuesday 28 November 8pm - Vera Fletcher Hall

ALL WHO LIVE OR WORK LOCALLY ARE WELCOME

TJ Bathrooms



Based in Cobham, we complete work across Surrey. Fitting Bathrooms, Kitchens and more with over 25 years experience we are more than happy to help.

Contact us by phone 01932 866471 or email tjbathrooms@hotmail.com for more information.

121 Anyards Road, Cobham, KT11 2LJ

News from the Residents' Association to end-August



The second year of the Nature and Climate Festival was a huge success bringing people together to look at what we can all do to help combat climate change. See pages 23 – 26.

RNLI visit Albany Reach

On a wonderful sunny Saturday in June the RNLI visited Albany Reach to talk to people about how to stay safe around the river and to demonstrate how to help anyone who may be in difficulties in the water.

This fun and educational afternoon was arranged by RA Councillor Caroline James, local resident Nell Hickman and the Residents' Association.

Members of the RNLI based at the station in Teddington came along with their lifeboat and crew, fully equipped to play the role of someone needing help in



RNLI crew acting as 'water users in trouble'

the water.

The team from the RNLI engaged with many visitors on the Reach and talked to a lot of young people about how to keep themselves and others safe.

One resident who attended said: *"It was a very useful session. I was shocked to find out how quickly the cold and the current can affect swimmers, and why swimming parallel to the bank is a lot safer than swimming across the river."*



RNLI staff talk about how to stay safe

Oak Processionary Moth

It became clear at our last residents' Open Meeting that the impact of Oak Processionary Moth (OPM) is being felt widely, and that many of us are not yet aware of the different symptoms that can be experienced.

The caterpillar of this moth has tiny hairs which can cause symptoms including itchy skin rashes and eye and throat irritations in people and animals. For more detail see the article on OPM in our Spring edition 2022 at residents-association.com). As people shared their experiences it was

Discover amazing experiences at **Busy Bees in Thames Ditton**



"Children are happy, settled and secure. It is evident staff care for each individual child. All children including those with SEND make good progress and children demonstrate positive attitudes to learning."

Large outdoor garden offers shaded outdoor space for each age group

Our long-standing team has welcomed and nurtured many children

Our staff have passion for the job and care for each individual child who joins us

Excellent links with the local community

Fantastic parent partnership



**Enquire today, call 0330 333 8133
or email enrolmentsbusybees.com**



clear that not everyone is aware of the symptoms of OPM or how to avoid them.

New additions to Thames Ditton High Street

This summer saw two new welcome additions to Thames Ditton High Street.

Fontana have opened a Pasta & Gelato outlet next to the popular café and the delicious fare gave a real taste of summer, (even if the weather was less cooperative.)



A treat in the High Street

The Lime Tree has opened an additional unit on the High Street at No 36, giving more space to present its fantastic range of deli goods, wines and more.

In June we held a meeting with local retailers, kindly hosted by the Home of Compassion, to see what the RA could do to help local businesses. We will continue to try and get the word out that we have great local shops across Thames Ditton and Weston Green.

Congratulations

Congratulations to Paull's Fruit and Veg for winning best independent retailer in Thames Ditton award in this year's Love Elmbridge Awards. It is their 10th award!



Explore the goodies at No 36

Thames Ditton Centre for the Community

We continue to be involved in the process of looking at how best the Thames Ditton Community Centre can become a thriving community asset. We hope to be able to have a full update in our next edition.

Planning

The appeal against the decision to refuse a planning application for an **Aldi store** was dismissed by the planning inspector following a public inquiry - see the article on page 19.

Amended plans were submitted for the **Molesey Venture site (2022/3525)** on Orchard Lane at the end of June. The applicant proposes to develop the site to provide 74 residential units. In spite of small changes made to the previous plan we continue to agree with local residents that this represents overdevelopment and intensification of a very sensitive site on the edge of the Green Belt. At the time of writing, the application has received 337 objections and only two letters of support. Given the number of objections, the application will be decided at the East Area Planning Committee later in the year.

We have also written regarding an application by Picton **House, 56 High Street, Thames Ditton (2023/1295)** where a proposal has been submitted to knock down a large section of historic wall in St Leonard's Road to the side of the property, and build two properties in the garden of this Grade II Listed building. We consider such a development would harm the character of the Conservation Area. A similar application in 1992 was turned down on this basis.

We also note an application to demolish **4 High Street, Thames Ditton (2023/1773)** and to convert from offices to residential use. We have already seen much of AC Court converted from offices to residential and have seen a number of other applications to convert shops to residential use. We firmly believe that a healthy and vibrant village centre needs a mix of commercial and residential property to function effectively. We were pleased that plans to convert what is now the Thames Ditton Bakery to residential were turned down, as were similar plans for what was Stitchery. We will continue to resist any further plans for residential conversion where we consider it harms our village.

Good news for our Green Belt and Local Green Space

In August Elmbridge Borough Council published its Draft Elmbridge Local Plan 2037 covering the next 15 years, prior to its submission to the Secretary of State for examination. The good news is that the Council has decided not to release any Green Belt for development and to designate 54 areas as Local Green Spaces which will be protected from development, including 10 in Thames Ditton and Weston Green. Among these are Ditton Field (the Kingston Grammar School playing field) and Emberside Recreation Ground.



Ditton Field – designated Local Green Space

This is great news for your Residents' Association which campaigned over seven years with fellow Residents' Associations and amenity societies from across Elmbridge to keep our Green Belt land and to protect our urban open Green Spaces.

All Saints Weston Green introduces 'Elevenses'

From September there will be two services every Sunday morning at All Saints Weston: a more traditional Holy Communion Service at 9.15 am and then a new weekly Worship for Everyone Service called 'Elevenses' will start at 11 am, so there will be something for everyone.

The new 'Elevenses' will offer time for people of all generations to come together and for children and families to feel at home with contemporary and interactive worship relevant to everyday life. It is also a chance to meet other families living locally in a relaxed environment. You are welcome to come any Sunday. Further information from vicar@allsaintsweston.com

Dates for your diary

Flood Information Drop In

Find out about Flood Resilience & Insurance

St Nicholas Hall, October 28

Doors open 11am - 4pm

Short presentations at noon and 2pm

Molesey and District Antique Society (MADAS)

Esher College, Weston Green Road

First Tuesday of every month from

October to June, 7.30pm

Farmers' Market

Mercer Close Car Park

(opposite the Library),

fourth Saturday of the month

Weston Green Litter Pickers

Meet at Marneys pub on the first

Saturday in the month at 10.30am

Thames Ditton Litter Pickers

Meet at Thames Ditton Tennis Club

car park third Saturday of the month at 10.45am

All Saints Weston Community Lunch

last Wednesday of every month. To

book, contact Alison Cruthers on 07957

347170 or alisoncruthers@yahoo.co.uk

Bereavement Café (open to all)

Third Tuesday of the month,

10.30 am - 12 noon.

St. Nicholas Church Hall

Call 020 8398 9641 for more information

'Knit and Natter'

Tuesdays 10.30am – 12 noon, Talbot

House Café, St Nicholas Church Hall

Tiny Saints Bumps and Babies café

Fridays term time 11.00 am – 12.30 pm

All Saints Church Hall, Weston Green

High Street Christmas Fair

Sunday December 3, 3-6pm

Includes Christmas Lights switch on

Residents' Association

www.residents-association.com

or follow us on Twitter @TDresidents

THAMES DITTON TODAY

THAMES DITTON • WESTON GREEN • EAST MOLESEY

We are looking for budding Magazine Editors

If you are interested in keeping the community

- Connected
- Updated
- Informed
- Engaged
- Entertained

Contact us at 0208 398 5534

or

editor@residents-association.com



THAMES DITTON TODAY IS THE MAGAZINE OF THE
THAMES DITTON & WESTON GREEN RESIDENTS' ASSOCIATION

Vera Fletcher Hall (VFH) news

The VFH Association has announced two new appointments. Neil Russell, as Chairman and Alison Black as Hall Manager. During the summer there have also been some refurbishments of the Hall.

See page 46 for the Autumn Theatre Programme.



Update from your Residents' Associations'

Thames Ditton Ward



Elaine Sesemann
TDWGRA



Caroline James
TDWGRA



Alex Batchelor
TDWGRA

ULEZ expansion

Elmbridge Borough Council (EBC) are supportive of improving air quality in Elmbridge and increasing trade in our high streets and parades, both of which are seen as potential benefits from the extension of the ULEZ.

However, our communities are geographically linked to Greater London and we are concerned about the possible impacts on small businesses and residents who cross into Kingston and Hampton daily. EBC has continually lobbied the Mayor of London and TfL to point out the impact ULEZ expansion will have on Elmbridge without a scrappage scheme for those outside the London boundary and we will continue to monitor the situation.

Afghan refugees

We were appalled by scenes outside the Crowne Plaza Hotel in July when protestors turned out to intimidate the refugees who had been living peacefully there at the invitation of the Home Office since they were uprooted from their country after the fall of Kabul in 2021.

To add further to their distress, the

Government has now withdrawn housing support for Afghans on the resettlement scheme, leaving Local Authorities to find suitable housing. Alex Batchelor is Portfolio Holder for Housing and says: *"EBC already has a waiting list of 2000 and affordable homes for rent are in desperately short supply, but we are committed to helping this vulnerable group to settle in Elmbridge as a priority."*

Council finances

It's been a difficult year for some Surrey councils, with Woking declaring bankruptcy and Spelthorne facing a £101 million reduction in the value of their investments, including £70m wiped off the value of commercial property outside their borough.

Fortunately Elmbridge faces no such threats. Last year EBC spending came in under budget, the property investments (which are all in Elmbridge) only lost £8m in value despite the difficult market, and windfall interest earnings on investments were used to set up a £500k Cost of Living Crisis Fund to help projects supporting our most vulnerable residents.

Councillors at Elmbridge Borough Council

Hinchley Wood and Weston Green Ward



Gill Coates
TDWGRA



Janet Turner
HWRA



James Crawshaw
HWRA

Green Spaces PSPO

The consultation on Public Space Protection Orders (PSPOs) elicited a number of responses from residents and the results provided enough evidence to introduce a PSPO on Albany Reach to prevent overnight camping/fishing and the use of naked flames (including barbecues).

Notices are going up announcing the PSPO which will be in force for three years. Breaching the PSPO is a criminal offence and it is hoped that this added protection will lead to a much-needed reduction in the amount of unauthorised camping at Albany Reach.



PSPO on Albany Reach

Civic improvements

The Council is currently exploring various civic improvement projects to enhance parts of Elmbridge, including Hurst Pool in Molesey (possible refurbishment / improvement); Lower Green (enhancements and improved connections) and Esher (improved town centre layout and potential redevelopment of the Civic Centre). These are all at early stages but demonstrate EBC's focus on inward investment and enhancement.

Local Plan

It has been a long time coming but Elmbridge Council approved the submission of the Local Plan to the Inspectorate in July. Subject to a few final minor amendments the Plan will now go forward for examination in public (EIP). With its brave mix of lower housing targets and enhanced environmental policies including no release of Green Belt land, many other local authorities are looking with interest to see how our Local Plan fares at the EIP.



Craft my Day

*Sewing, Sculpting, Mosaic, Macrame,
Painting and more!*

Thames Ditton
Worcester Park

**Adult Craft Workshops
Short Courses
Kids Clubs
Parties
Holiday Clubs**



www.craftmyday.com

Antique Clock Restoration & Repair

Specialising in Grandfather, Dial,
Bracket and Carriage Clocks

Contact: Mark Rowe M.B.H.I
BADA Diploma. Member of the Watch &
Clockmakers Guild. West Dean Diploma.



Tel: 020 8605 0331

www.theclockgallery.co.uk

Additional Restoration services available
for Watches, Books, Ceramics and Fine Furniture.
Antique Clocks also bought and sold.



one of the biggest selections of jelycats
for any store in the entire country



love thames ditton
sh♥plocal

view
thames ditton

34 High Street Thames Ditton KT7 0RY 020 8972 9706

  @ViewGifts www.view-gifts.com

design: www.thesetupdesign.com thames ditton

Update from Nick Darby, our Surrey County Councillor



First some good news!

I am delighted to be able to report the new 20mph roundels on Station Road and some white line refreshing elsewhere in the village. I really hope the roundels encourage all drivers to keep to the limit. More needs doing but this is a good start.

We are also due changes to the parking on Watts Road to reduce gridlock, and to reduce dangerous driving on the pavement on the section away from Linden Close towards the village. This was approved some while ago, but implementation was delayed.

I eventually received a quote from Surrey Highways for the resurfacing of Church Walk, the work potentially to be carried out next year. This would use my complete annual allowance so requires careful thought. St Leonards Road is on a separate list, timing to be agreed. If residents have comments, please get in touch.

Regarding Warwick Road, extra yellow lines were approved at least 12 months ago, but have not been installed due to contractor delays. I have continued to remonstrate with both officers and contractors. We are well beyond the 'polite request' stage.

I mentioned last time claims by drivers for damaged tyres and suspension due to potholes. The Surrey team which deals with these say they are dealing with about 4,000 claims, so use that as an excuse for failing to comply with the 90-day timescale allowed.

On Aragon Avenue, more than a year ago we installed double yellow lines to try to stop parking on this road which gives access to Albany Reach. Having taken back parking enforcement from Elmbridge,



Surrey County Councillor, (The Dittons) Nick Darby

Surrey currently have insufficient staff to do the job. This causes weekend misery to residents. The contractors say simply they will enforce once they have sufficient resources.

And finally, to verges. Surrey took responsibility for cutting back verges from Elmbridge some months ago. This was accompanied by poor weather, cuttings abandoned (the equivalent of leaves on the line), blocked drains, and a reduction in what is cut, due to rewilding. Work is needed to improve this service.

With this, as with the other items I have mentioned, Surrey can hardly be said to run services efficiently, nor to listen to Councillors about how to turn things round.

With very best wishes to all.

**Nick Darby,
Surrey County Councillor for the
Dittons 0208 398 2382**



FREE Postage !

Christmas Gifting

Send someone you care about, a bottle of our Original, Pink or Navy Strength gin before Christmas and we'll cover the postage for you, when you buy online. Use this Promo code: **XMASPOST**



Scan me



Love your gin! It's the only gin I drink now. Even my father who is a staunch Beefeater gin stalwart - loves Thames Ditton Gin!

ThamesDittonGin.com

Ajax Sea Scouts – 75 years and counting



Sea Scouts demonstrating their skills on the Thames

The 4th Thames Ditton Ajax Sea Scouts, better known simply as 'Ajax', is celebrating its 75th anniversary this year. That's 75 years of bringing rowing, sailing, kayaking, canoeing, power boating, and more recently, paddle boarding to generations of local children and young people.

Ajax was officially registered as a Scout Group in 1948 by founding members from 1st Surbiton Park Scout Group including Donald 'Doc' Stone and Roy 'Chiefy' Sharman - names that still live on in one of our Wayfarer sailing dinghies and our beloved Water Activities Centre.

In the early years, Ajax had no purpose-built activity centre with boat storage and changing rooms. The group headquarters for many years came in the form of the Ajax Motor Torpedo Boat number 747 (hence our name), moored just downstream of the current Ditton Reach site. Unfortunately, the MTB had to be towed to the scrapyards due to dry rot, but not before the ship's wheel

was sneakily removed making the whole operation much more challenging! This wheel has found a new home proudly displayed on the wall of the 'new' Chiefy Sharman Water Activities Centre that has been home to the group for the last four decades.

In 1949 Ajax applied to the Royal Navy to become one of the select few (only 100) sea scout groups to be RN recognised, and has remained so to this day, passing muster at many Royal Naval Inspections in the intervening years.

Today, Ajax continues to bring the excitement of water sports and the community of scouting to as many young boys and girls as we can, having grown hugely from the original troop of 24 boys to an energetic Beaver section, a creative Cubs section, a much expanded and well-skilled Scout troop, and adventurous Explorer unit.

All our sections meet weekly and organise their own activities, yearly camps and nights away. The two-week coastal Scout/Explorer

summer camp is a highlight in the yearly calendar of not only our young people, but of many a leader and instructor too!

Our fleet of boats is at the heart of our weekly activities and includes three Home Counties gigs designed specifically for Scouting, various sailing dinghies from large Wayfarers to more high-performance RS Visions, and most recently a fleet of paddleboards and touring kayaks to further expand our paddle-powered horizons in the future. This variety ensures that there is something for everyone to enjoy.



Ajax Sea Scouts out for a paddle

Being part of the wider local community is very important to us and we are incredibly proud to join with the other local Scout Groups to host Remembrance Day on Giggs Hill Green. We also coordinate the Esher May Fair, which regularly attracts 5,000+ visitors, boosting trade for local businesses and helping us raise funds for the Group. And the annual plant sale that we hold as a fundraiser in Spring has become a firm favourite, drawing strong support from the Thames Ditton community and beyond.



Ajax Sea Scouts at Remembrance Day

We are always looking for more adult volunteers to help our leaders deliver exciting programmes for each of our Beaver, Cub, Scout and Explorer sections. Could that be you? Please also contact us if you would like your child to join us.

To find out more, please contact Chris West, Group Scout Leader, Ajax Sea Scouts at chris.west@ajax.org.uk



The two week coastal camp is a highlight

The Aldi story



By now most residents will be aware that Aldi's application to build a stand-alone store in Thames Ditton, on the site of the old Guy Salmon car showroom, was dismissed by the government's Planning Inspector following the decision of the Council's Planning Committee to refuse the application last August.

While we appreciate the cost advantages of Aldi's offer (many of us shop there) the Guy Salmon site is not an appropriate site for ANY supermarket. This site is in a residential area, not in an existing local shopping area such as a high street. The hundreds of residents who wrote in to object were well aware of this.

Reasons for objections varied: for immediate neighbours it was primarily the impact on their quality of life of a high building (equivalent to a four-storey block of flats) in use seven days a week from early morning until late; for cyclists it was the loss of the cycle lane along that section of the busy Portsmouth Road. For small businesses, particularly those in Thames Ditton High Street, and the residents who rely on them, there was the fear that the footfall - and life - would be sucked out of the village at a time when our high streets are struggling. We are already aware of the loss of one small but valued general store of long standing merely because of the threat of Aldi. We know of others which were planning to close if Aldi had succeeded.

Local residents were concerned about the increased traffic which Aldi would attract given traffic congestion caused by similar stores. In addition, local residents, already faced with pressure on 'on-street'

parking in their streets by commuters, were very concerned about the impact of the inadequate size of the proposed car park on on-street parking in the vicinity, particularly from employees.



Artist impression of the proposed Aldi

One of the two important reasons the Inspector gave for dismissing Aldi's application was the impact of the development on the Conservation Area and the Grade II listed Angel Pub. Conservation areas exist to preserve or enhance the special architectural and historic character of a place - in other words, the features that make them unique.

Their significance may go back hundreds of years (as with Thames Ditton) or as little as 50 years (e.g. Lakeside Drive Conservation Area in Esher). This basically means that the bar for any development which might affect a Conservation Area is higher than is required for development elsewhere. There is no overall ban on development, just an emphasis that any development should 'preserve or enhance'.

There have been several previous applications, including one for a Tesco

Stuart James Antiques

**We are part of
the largest recycling
network in the world!**

We sell 18th to mid 20th century furniture, mirrors and decorative items, together with modern lighting and handcrafted candles in a myriad of colours.



design: www.theseupdesign.com thames diton

**Open 7 days a week
from 11.30am to 5pm**

77 Bridge Road, East Molesey, KT8 9HH

Instagram  @StuartJamesAntiques

07808 739857

Alan Greenwood & Sons

Independent Family Funeral Directors



Latest Jaguar or Mercedes Hearses and Limousines

Quality Service 24 hours a day

Home visit arrangements

Golden Charter Pre-paid funeral plans

We will not be beaten on price



1 The High Street
Claygate
KT10 0JG

57 Fleece Road,
Long Ditton
KT6 5JR

13 Molesey Road
Hersham
KT12 4RN

259 Ewell Road
Surbiton
KT6 7AA

01372 377 377

020 8398 0012

01932 260 046

020 8399 4455

Visit Our Website for Full Details of Our Services and to View Our Obituaries

www.alangreenwoodfunerals.com

superstore beyond the southern tip of Giggs Hill Green, known at the time as the '*Milk Marketing Board*', another for a residential development where the well-used current Library and Centre for the Community Centre car park is located, as well as a number of appeal decisions relating to individual properties. So, the Inspector's decision in this case is consistent with previous Inspectors' decisions.

The Residents' Association supported the '*Rule 6*' party (an additional party to the proceedings, separate from the council and the applicant) because it was clear that an overwhelming majority of local residents responding to the planning consultation on the application had significant concerns.

Analysis of the responses showed that those objecting were far more likely actually to live in and around Thames Ditton than the supporters of Aldi, who tended to come from a wider area.

This was something of a '*David and Goliath*' battle - a council with limited means, together with a Rule 6 party with even fewer resources, up against a large international corporate business with very deep pockets and an aggressive approach to expansion.

We could not have contemplated taking part in the Inquiry as a Rule 6 party had it not been for the huge support from a wide range of people, most of whom studied the application deeply and penned well-reasoned arguments about why this application was inappropriate in this location.

The collation of invaluable data provided by local residents enabled us to challenge the evidence put forward by Aldi on, in particular, parking stress in local streets. Those who attended the public inquiry will have seen just how strong and well-presented was their '*parking stress*' evidence. Despite not being 'expert' witnesses this group of

residents unambiguously identified the many mistakes in Aldi's own '*experts*' data.

We have to thank all those who were prepared to '*put their money where their mouth is*' so that we were able to raise the funds to pay a professional barrister to represent our position. In total we had direct contributions via Collection Pot from more than 180 people and raised more than £16,000 - a massive achievement! Direct contributions included small amounts from people living on limited means. We also had very significant help and support from others who worked hard behind the scenes, including all our Elmbridge local councillors and of course Elmbridge Council whose decision Aldi were appealing.

The RA were fortunate to have the services of a brilliant young barrister, Jake Thorold, and we were also very fortunate to have the benefit of pro-bono advice from a couple of KCs in his chambers, one of whom lives in Thames Ditton. The other '*expert*' in our team was Michael Phillips, who acted on our behalf, on an unpaid basis, as our Conservation and Heritage expert. Mike is a local architect by profession as well as being Chair of an adjacent Conservation Area Advisory Committee. He brought to bear his invaluable experience in this arena and his wide understanding of the rules and regulations relating to planning, heritage issues and technical data collection issues enabled us to question the evidence produced by Aldi.

We do not know where the next challenge will come from but this experience has clearly demonstrated the strength of our community. We are *not* simply against all change, but we do live, work and play here, this is where our homes are and we must be able to influence what happens to our area for the greater good.

Karen Randolph

A more thoughtful approach to law

Pleased to support
The Nature and Climate Festival

**We do the right thing for the
environment. We:**

- **offset all our carbon emissions**
- **have two beehives on the roof**
- **have solar panels on our Putney office**
- **have a paper-free policy in place**
- **recycle our waste**
- **use sustainable suppliers where we can**



What a Wonderful Weekend at the Nature and Climate Festival 2023



We Are The Voice Children's Environmental Choir gave a stand-out performance

What a wonderful weekend we had 7 – 9 September. By bringing the community together and having fun, the second Thames Ditton Nature and Climate festival really got down to the business of raising awareness about climate change and helping and encouraging us learn how to lead more sustainable lives.

Our key community spaces, the Vera Fletcher Hall, the Thames Ditton Centre for the community and Dittons Library were humming all weekend. We are very grateful to Helen Abbott and her team at Dittons Library for hosting events and for opening specially on a Sunday.

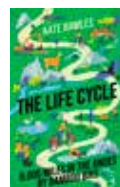
As well as inspiring talks, the Vera Fletcher Hall hosted two entertainment evenings.

Comedian Ted Hill hosted The Big Green Comedy Night which succeeded in mixing laughter and food for thought. On the Saturday evening *We Are The Voice - Children's Environmental Choir* performed a standout show using wonderful harmonies to inspire the audience to really consider the environment.

There was information and evidence about the state of our environment along with plenty of help with how to cut down on 'stuff' and how to buy more sustainably. There were workshops on repairing, opportunities to recycle tech and spectacles, and a fabulous fashion swap run by LOANHOOD.

We heard from amazing speakers including Anna Turns who talked about how to go toxic free; Kate Rawles who cycled the length of the Andes in a Bamboo bicycle to bring attention to the nature and climate crisis; Oli Franklin who is passionate about getting to grips with the waste we throw out.

(All three have written excellent and entertaining books which you can buy / order from Denny's Books.)



Rivers and Oceans



Rewilding



The Circular Economy



Living Sustainably



Dr David Greenfield was inspiring on Tech re-use



Tech-Takeback in action



Repair workshop teaching new skills



Wildlife projects with Wildlife Aid Foundation



The 'Create a Creature' workshop



My Planet, My Future - Q&A Forum for young people

There was so much packed into the Nature and Climate Festival weekend these images only capture a flavour of the events. Keep a look out for some of the stories in future editions and on our website ***residents-association.com***



Testing the water with Planet Patrol, Citizen Science at work



Oli Franklin talking about “the dirty truth about what we throw away”



Fashion Swap to reduce waste



Thank you to Tannia and Lorraine for sustaining us with the Green Café



Ditton Library hosted many events

Do you want to help Planet Patrol to improve water quality?
Could you be part of a local group of Citizen Scientists
and commit to testing the quality of our local rivers? If
so, please contact ***editor@residents-association.com*** and
check out ***planetpatrol.co***



Thank you for a fabulous Festival Weekend



It takes a lot of work to put on such a great weekend and the Thames, Ditton and Weston Green Residents' Association would like to thank:

Main festival sponsors, Russell-Cooke Solicitors,



and, the RC Sherriff, Trust and the Surrey Climate Commission for grants.



Photography Competition sponsors, Killick & Co, Comedy Night sponsors, HJC estate agents, Youth Panel sponsors, Bags of Ethics



- Co-Op for Smoothie Bike ingredients.
- Lisa Tolley for festival logos
- Peter Haynes for the website
- Susie Morgan for a feature in About Thames Ditton
- Megan at Denny's Books,
- Anne at Squires Garden Centre,
- Thames Ditton Gin
- Thames Ditton Brewers
- Helen and everyone at Dittons Library.
- Amelia and Alison at the Vera Fletcher Hall
- Nicki at the Thames Ditton Centre
- Nigel Greenaway and Chris Greateorex from Riverhouse Barn
- Tannia Shipley and Lorraine Hecquet in the café.
- Singer/songwriter Ellie Goulding and Jen McCord for judging the Photography Competition
- All our brilliant speakers, presenters and performers for joining in with the festival and especially to the brilliant journalist, broadcaster and environmental campaigner, Lucy Siegle, who has again given so much time to help make it happen.
- All our volunteers who made this festival possible
- And you, our residents, for supporting it

Huge thanks to the 2023 Festival steering group: RA Cllr Gill Coates; journalist and campaigner Lucy, Siegle; RA Cllr Caroline, James; PR/writer, Katie Randerson and Fundraiser/Conservation volunteer, Esther Pye.

Do you know your flood risk?



Some 250 properties in Thames Ditton (mainland) plus more than 40 on TD Island are in the 'high risk' area for flooding, meaning that every year there is a 1 in 33 chance of them being flooded. This does not take into account climate change, which will make the situation worse. Many more properties will be at a lower risk.

Although the Environment Agency is considering barrier schemes to help protect some high-risk areas of Thames Ditton, there is now greater emphasis on increasing the flood preparedness of local residents.

What can Thames Ditton residents do now to protect themselves, their homes and businesses?

Property Flood Resilience (PFR) is one way do to this. It works alongside traditional engineered defences to manage property flooding from various sources such as rivers, the sea, surface water and ground water.

PFR has three components.

- **Preparedness** – knowing what to do and when to do it. Check your flood risk, sign up for flood warnings, create a flood plan and maintain any PFR measures you have installed.
- **Resistance** – using products (flood doors, barriers, non-return valves etc) or building materials to stop or slow the entry of water to your property to give you time to rescue cherished possessions and to get loved ones to safety.
- **Recoverability** – adapting the property to minimise the effects and damage of floodwater should it enter the property and to aid faster recovery.

More people need to choose to invest in PFR, yet research has shown that many homeowners do not consider it because of perceptions of high cost, concerns about how it works, lack of information and understanding about their flood risk and what they can do.

The Environment Agency and Flood Re (a unique partnership between the Government and the insurance industry to ensure the availability and affordability of flood insurance for households) have recently launched the **#befloodsmart campaign** www.floodre.co.uk/be-flood-smart to raise awareness about flood risk and how PFR can make a positive difference which includes reducing damage, anxiety and stress.

To help local residents, the Thames Ditton Resident's Association Flood Group are organising a Property Flood Resilience Drop-In Day on Saturday October 28.

Property Flood Resilience Drop-In Day on Saturday October 28

**Where: St. Nicholas Church Hall,
Summer Road**

**Time: From 11 to 4pm, with talks by
experts at 12pm and 2pm**

The Environment Agency and Residents' Association have gathered experts from the flood risk industry to help residents learn more about PFR, flood insurance, build back better and also get advice on next steps to take.

Who can you meet?



Mary Long-Dhonau OBE (FloodMary)

1. Mary Long-Dhonau OBE (FloodMary) www.floodmary.com

For more than 20 years, Mary Long-Dhonau OBE - also known as *Flood Mary* - has been supporting communities across the country to provide impartial advice on what can be done to take ownership of managing risk at our homes and businesses. Having been flooded herself she has made it her life's passion to help those facing the threat of flooding, with flood preparedness, property-level flood resilience and recovery advice and support. Mary will be talking about her experiences and will describe the positive impact property flood resilience has had on homes up and down the country.

2. Flood Re www.floodre.com

A Flood Re representative will be available to answer any questions relating to household flood insurance.

Flood Re is a joint initiative between the Government and the insurance industry to ensure that flood insurance remains available and affordable in areas of high flood risk. It puts a cap on the price consumers pay for insurance premiums.

Since its launch in 2015, 98% of householders with a prior flood claim(s) can now receive

quotes from ten or more insurers. Four out of five householders with previous flood claim(s) have seen a price reduction of more than 50%.



Find out about flood resilience

3. Watertight International www.watertightinternational.com

As Environment Agency PFR Framework providers and Build Back Better delivery partners for a leading British insurer, Watertight design, source, install and maintain bespoke and innovative PFR solutions for individual homeowners, communities and businesses. Watertight will be demonstrating a wide range of property flood resilience measures at the event, enabling visitors to learn more about the various options available and to see a selection of PFR measures and products first-hand. They will also offer a free initial survey to help interested property owners in the high-risk areas.

4. Resilico www.resilico.com

The Resilico 'flood compliance platform' is a risk management tool that allows property owners to take ownership and responsibility for climate risk and adaptation. The Resilico Connect mobile app is designed specifically to allow homeowners to be prepared for flooding providing access to bespoke flood warnings and allowing users to set up a personal flood plan. It will be demonstrated to residents.

Secret Gardens 2023 ... a day of two halves



Georgina Martin's lush oasis

It was a day of two halves at this year's Secret Gardens of Thames Ditton 2023.

From 2pm onwards on Sunday June 11, a total of 12 gardens in our fair village opened their gates to a steady stream of visitors who enjoyed an hour and a half of warm sunny weather – ideal conditions for viewing the myriad attractions of old favourites and new gardens at this year's event.

Then, at 3.30pm, the heavens opened! The warm muggy weather had been threatening for most of the day and the rain finally came down in torrents on carefully-tended borders – and on the people viewing them.

Cue the British bulldog spirit! Many visitors carried on regardless, some having dashed home for hats and brollies, some striding out with just a folded newspaper on their heads for protection. Local attractions like our pubs and the super Thames Ditton

Gin pop-up in Ashley Road suddenly became hugely popular – and apparently St Nicholas Church has rarely been so full...

British weather being what it is the skies cleared by 4pm and the visitors returned – some more bedraggled than others, but all determined to 'do the tour' before the garden gates closed again at 5.30pm and the garden owners themselves staggered off for a well-earned drink.

This year saw three new gardens added to the list of old favourites, and a change of venue for the hugely popular tea and cake stands.

A charming and child-friendly haven of butterflies and the odd fairy drew visitors to Bell Cottage on Church Walk and on from there to the much-loved gardens of Keith and Lesley Evetts, Charlie and Jill Poole and Andrew and Anita Pratt.

A quick trip to the Garden of Remembrance turned into a much longer stay for many visitors as they perused a well-stocked 'plants for sale' desk and some stunning floral arrangements in St Nicholas Church itself. Both these welcome innovations were the brainchild of the band of indefatigable volunteers who do so much behind the scenes at the church and garden.



Bell Cottage was a child friendly haven

Another new garden this year was a simply stunning riverside retreat in Riversdale Road, complete with patio area, hot tub, perfect planting and a view up, down and along Thames Ditton Island. It came as little surprise to discover that the owner was...a garden designer! The plethora of stylish good taste (courtesy of a certain garden designer) also rubbed off on Georgina Martin's gorgeously lush oasis off Watts Road.

It was great to see the Home of Compassion entering into the village spirit this year, and their sweeping expanse of lawns, borders and stunning views of the Thames hosted

many visitors. Cambio in Burtenshaw Road had a wildflower makeover for this year's event.

Maybury Lodge, the Secret Gardens HQ in the High Street, was a riot of roses and peonies, all blooming together after that strange, dry/dull spring. This year Maybury Lodge gratefully handed over responsibilities for teas and cakes to Lynton sheltered housing in St Leonards Road, where the team worked hard to keep up with demand for the various cakes that had been baked by volunteers and donated by the Co-Op – and worked even harder when the rain came down to protect the cakes and keep serving hungry mouths in the communal dining room.

The riverside garden in Queen's Drive was another newbie this year – although the owner had been tending it for almost 40 years! The view down and up the river as far as Kingston was stunning, as was the ancient Cedar of Lebanon tree that stood so majestically centre-stage.

An event such as Secret Gardens takes a compost heap's pile of organising, so huge thanks to local artist Lisa Tolley for her hand-drawn maps and tickets, to View Gallery and the Secret Garden florist for selling advance tickets, to all the volunteers who baked cakes, helped wash up, designed floral displays and manned plant stands, and of course to all the Secret Gardeners themselves, who worked so hard before and on the day to bring such pleasure to our village.

Together we raised a splendid **£1,437** for the Residents' Association to support the Thames Ditton Christmas Lights fund and the Garden of Remembrance at St Nicholas.

Next year the baton of Secret Gardens passes to Weston Green – see you back in TD in 2025, in the sunshine we hope!

*Andy Anderson, Libby MacIntyre &
Caroline James*

Secret Gardens organisers

Take the Jump



‘Take the Jump’ is a people-led movement that has taken the hard work out of deciding how to live more sustainably by researching the six easiest things we can all do to make a big difference to our carbon emissions.

If you missed Diana Thornton introducing ‘Take the Jump’ at the Nature and Climate Festival we asked her to tell us about it here.

People often wonder whether individual action is worthwhile in the face of our changing climate. ‘Take the Jump’ has grasped this nettle once and for all through new scientific research* and the answer is a resounding YES, it is worthwhile. And, the same research identified which actions will actually have the required impact.

The research used data from the University of Leeds and identified that individuals have primary influence over 25-27% of the emissions savings needed by 2030 to avoid ecological meltdown. (To stay within the accepted 1.5° level of warming, emissions need to reduce by 2/3 by 2030.)

This is the first time the potential impact of individuals has been quantified and shows that we are not powerless. For me, this is inspiring bringing a much-needed sense of hope and purpose into a situation which can feel bewildering and overwhelming with so much conflicting advice out there.

Clearly this still leaves 73-75% of emissions which are the responsibility of government and business. But these bigger changes will be slow to filter through because they require changes to infrastructure. It is expected that their main impact will start to make a difference after 2030.

This current decade until 2030 is therefore critical for individuals, who can be more agile in changing their behaviours, to take action. And it is the higher income groups whose changes in behaviour will have the most impact as consumption is highest in those groups.

The beauty of ‘Take the Jump’ is not only its clarity but also the recognition that we are all imperfect. None of us will get it right all of the time. But that’s OK. We can just start and do what we can with the 6 shifts.

To ‘Take the Jump’ is to sign up to try the 6 shifts for 1, 3 or 6 months. Just start! Hypocrites welcome

The 6 shifts are:

1. End clutter: Keep electronic products and home appliances at least seven years
2. Holiday local: One flight every three years
3. Eat green: A plant-based diet, healthy portions, no waste
4. Dress retro: Three new items of clothing per year
5. Travel fresh: If you can, no personal vehicles
6. Change the system: At least one life shift to nudge the system, like moving to a green energy company or a green pension supplier.

You can sign up to ‘Take The JUMP’ at www.takethejump.org where there are lots of helpful resources about each of the shifts.

To ‘Take the Jump’ together and find tips and support from neighbours and friends join the local Whatsapp group by scanning the QR code here:



*The research was undertaken by Arup, overseen by C40 Cities and based on evidence provided by the University of Leeds School of Earth and Environment.
Diana Thornton



**INDEPENDENT,
TRUSTED FINANCIAL
ADVICE IN THE HEART
OF THAMES DITTON**

Knight James’ are a friendly, local business offering trusted, impartial financial advice.

Our experienced team are able to offer advice in the following areas:-

- Mortgage & Lending Services
- Investment & Pension Advice
- Portfolio Management
- Retirement & Tax Planning
- Corporate & Employee Benefits
- Commercial Insurance

Contact us today to find out how we can help to put you on the right financial path.

	MORTGAGE SERVICES	
COMMERCIAL INSURANCE		WEALTH MANAGEMENT
	INVESTMENT & PENSION ADVICE	

Call 020 8398 6677
www.knightjames.com
6 Station Road, Thames Ditton, Surrey KT7 0NR



Memories from a long life living in Thames Ditton



Do you know anyone who still lives in the same house in which they were born? Valerie Baxter was born in the front bedroom of a house in Church Walk, Thames Ditton, just after World War II had started, and rather unusually she still lives in the same house! This is some of Valerie's story:

"In the early 1930s my parents moved to Thames Ditton to save money on the rent. My father was a metalworker and his first job was with Thames Ditton foundry, which was closed in 1939 when it seemed likely that it would be taken over for war munitions manufacture.

"I was born in the war years and therefore didn't really know anything else. From a child's perspective Thames Ditton seemed little affected, although I remember my sister and I going to the United Dairies shop (located where The Rose is now) and having to quickly return there when the air raid siren went off, to hide in their back storeroom as it had no windows.

"I went to school in the houses in Old School Square before going across the road to the junior school, which is now the modern infants' school.

"For amusement, I would play with my friends in the large area of St Pauline's ground, now called Colets, and I loved going up and down the Back Lane at the rear of our gardens, using my wooden scooter and fairy cycle. The library was a rather large green shed located opposite our current library on the little island of shrubs across the road. The Ash Path alongside we knew as Cinder Path, and the Cedar Cottage on the right was known as Dog Kennel Cottage!



Valerie in the front room of the house where she was born.

"When I was a teenager my father would meet with four other singers in our living room, to sing madrigals. It inspired my lifetime love of singing and I learned a lot from them. I still enjoy singing madrigals from time to time and I sing in my church choir.

"I passed my 11+ so I attended Tiffin Girl School and then I trained as a PE and English teacher at Bishop Otter College, Chichester for two years. My last teaching post was at Coombe Girls' School in New Malden before I retired.

"Eventually my father purchased the freehold of our house from Lichfield Speer, who owned a lot of property in Thames Ditton at the time.

"I have never married, and although I have stayed put in Church Walk I have travelled all over the world including many pilgrimages to the Holy Land with my

church at St Andrews' in Surbiton, as well as regularly visiting my nephew in Australia.

"I used to be a girl guide and then I ran the 2nd Thames Ditton Guides for ten years. I'm now chair of the Trefoil Guild for Emberbrook which is the name given to our area as it used to be our telephone exchange. I've been a tour guide at Kew Gardens for 25 years and am a Sacristan at St. Andrew's, which means I am responsible for all the housekeeping for services.

"I'm glad that the village has thrived. I fondly remember the two sweet shops - Mrs Woodley's 'Corner Shop' in the High Street and 'The Cabin' opposite the Home of Compassion to the right of the weather-boarded houses, which were once condemned. I've seen so many shops come and go: the butchers, 'Grimes' - now

demolished - and 'John Theltons'. We've been through our antique shop phase and then our beauty shop phase - and now, once again, we have so many useful shops in the village and the new larger store on Summer Road."

Has Valerie ever thought of moving? In answer to that question, she said:

"My friends ask me that! They wonder why I don't move to Surbiton as much of my day to day life is spent in that community. To put it simply, I just like it here. I like living in a village and there is a significant community feel which makes me feel at home when I return from my travels or outside activities. I feel I have everything I need, so why would I move?"

Julie Royce

Karen's Angels

The All Needs Carers



Karen's Angels is a friendly local care company, operating in Surrey.

We provide professional 24 hour care, social and personal care services.

We are very proud of the excellent reputation we continue to achieve with our customers, their families, local authorities, GP's and DN's.

For further information please contact

Karen
02082247848
07760220604



ZYoga

**NEW YOGA STUDIO IN
THAMES DITTON KT7 0PS**

**PRIVATE 1-1
SESSIONS & CONSULTATION**
LED BY YOGA TEACHER AND
THERAPIST, CONVENIENT SETTING
CLOSE TO YOUR HOME

CALL  07754 734304

 @zyoga.uk www.zyoga.co.uk

The Molesey & District Antiques Society (MADAS) returns to Thames Ditton



After a few years away the Molesey & District Antiques Society (MADAS) has returned to Thames Ditton. MADAS is now meeting in the very comfortable auditorium of Esher College on Weston Green Road on the first Tuesday of every month from October through June each year. Talks are an hour long, starting at 7.30pm with a brief Q&A period afterwards. There is plenty of parking space, though for those living in Thames Ditton and Weston Green, it may be an easy walk to the College.



Molesey & District Antiques Society meet at Esher College

For those of you unfamiliar with the Society, it was started 55 years ago and it has been going strong ever since. Originally all the talks were on antiques but the programme has evolved so that it now

comprises roughly three talks on antiques, three talks on art and architecture and three on history. In the history section we always try to have a talk on a local company or local historical figure or place. In recent years we have had talks on Bentalls department store, the aviation business connection with Kingston starting with Tommy Sopwith in WWI up to the 1980s, and Frederick Paine Undertakers among others.



This season MADAS will be having a talk on AC Cars

This season we are having a talk on AC Cars. The company moved to Thames Ditton in 1913 and remained until 1985. During that time they produced a string of exciting and groundbreaking vehicles from two-seaters to three-wheelers, sedans, coupes and various racing cars that participated in international races such as the Monte Carlo rallies. Their AC Cobra sports car became one of the iconic sports cars of the 1960s and 1970s.

Their factory was at the Ferry Works down near the river, though they also took over an old Balloon Factory on Thames Ditton High Street at one point. There is a fascinating story and a surprising business

to find in our small village.

Other talks this season will be on the newly refurbished Big Ben and the Elizabeth Tower, Silver Fakes and Forgeries, Christmas in London down through the centuries, a History of Political Cartoons, Maritime Art from the 16th century to the Present and a lively and amusing talk on Plagues and Pestilence in old London!

If any of these topics catch your interest do come along and join us. The annual subscription fee is £30 for nine talks which is a bargain. Or just come on the night as a guest visitor. The charge for these evenings is £5.

Have a look at our website www.moleseyantiques.org.uk to find out more about both the Society and our various talks. We look forward to seeing you.

Linda Lambert



Get in a festive mood finding out about Christmas in London through the centuries

Fun Filled Music Lessons
in
Esher
Thames Ditton - Molesey

Flute, Piano, Theory,
Composing & Instrumental
Ensembles

All Ages & Levels Welcome
Beginner to Advanced

Call:
07722 574625
Email:
colleenmuriel@hotmail.com
elflauto.ca
colleensmusiccollege.com

**Christmas Flute Music
For the Soul**

December 16, 2023 @ 3 pm

Time to Relax and enjoy those
old traditional carols

An hour of relaxation
just what you need in the midst of the
Christmas Rush
@
Lower Green Community Centre
Recreation Ground, Farm Road
Esher, KT10 8AU

No tickets or entry charge
just pop a few shekels into the flute case,
sit down and enjoy

For further information:
07722 574625
colleenmuriel@hotmail.com
elflauto.ca

King's Church at the former United Reform Church building.



Preparing the URC pews for the trip to Tonga

King's Church opened its doors in 1994. Since then the church has had many homes, including the Army Reserve Centre, Kingston University, and most recently (pre-pandemic) the Rose Theatre. Due to the COVID-19 pandemic regulations, King's needed to have two separate gatherings and settled on one in New Malden and one in Thames Ditton.

King's Church purchased the former United Reform Church Building in Speer Road in March 2022. The building has undergone extensive renovation, including a new office, new toilets, new heating, and most notably the removal of pews from the sanctuary.

In an effort to make the space more versatile we decided to sell off the pews, first turning to Facebook Marketplace.

Expecting one or two people to be interested in the pews as a décor item in their homes we were so surprised and pleased when a Welsh-based pastor from a Tongan church reached out to us. The church

in Tonga had been destroyed by a tsunami and they were in the process of rebuilding. The pews were removed and sent off to Tonga via Wales through a collective effort of King's Church members and Tongans! They are currently at the port in Tonga but we hope to have photos of them in situ soon.

We have established a new Toddler group, Thames Tots, which meets every Friday from 10-11am at the church. Thames Tots offers a space for babies and toddlers to play through toys, songs and craft. If you're a parent or carer, we'd love you and your child to join us.

We also have an existing older peoples' group called Elderberries, a social group for independent over-60s. It runs fortnightly on Tuesday in Surbiton. From September 2023, King's Church will be starting a fortnightly Elderberries Light Lunch in Thames Ditton on Thursdays, with the first one on Thursday September 14 at 12 noon. Do come along if you can.



ARE YOU CONSIDERING AN EXTENSION, LOFT CONVERSION, OUTBUILDING, OR ANY OTHER ALTERATION OR ADDITION TO YOUR PROPERTY?

Thames Design and Build provides architectural design and/or construction services to clients across Surrey, with over 80% of our projects being Elmbridge based.

We offer:

- A free consultation to discuss your ideas and advise you on the possibilities and permissions
- A fixed quote for all stages of architectural work
- A fixed quote for your build – we are equally happy to provide a build quote in respect of your existing designs

We have a large portfolio of clients within Elmbridge, so whatever your plans are, we should be able to show you a comparable completed project.

Please email us at info@thamesdesignandbuild.com or call us on **020 8398 9252**



"We were recommended to TDB for their architectural design service. We liked the clarity of the process and costs, and we were delighted when our plans were approved. We asked three firms to quote for the build, and while TDB didn't come out the cheapest we again felt that we knew exactly what was included and we thought that the price was fair. We expected some stresses during the building project, but the TDB team were great to work with, and ultimately everything was finished on time, and there were no surprise costs. Overall, we couldn't be more pleased". Mrs SM, Surbiton

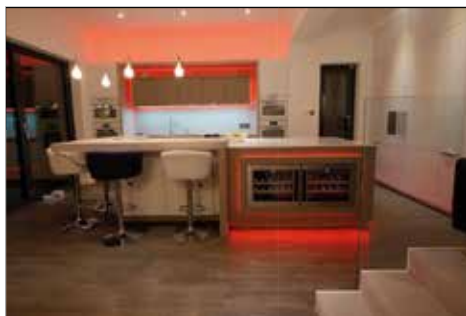


Our Sunday services are at 10.30am, with contemporary worship songs, a talk from the Bible and opportunities to pray and chat. We have a creche (Little Sparks) and kids groups (King's Kids) for 3-11 year olds. We also have a monthly Friday night youth meet up - do contact us if you're interested in knowing more.

We were pleased to welcome so many of you to our Family Fun Day in June, to see our new building and to formally open our doors to the community. We love the building and would love you to come and visit sometime. Feel free to come on a Sunday from 10:30am or pop into our office Monday to Thursday 9.30am-3pm.

We look forward to meeting you. **John, Philip and Kate - The King's Church office team**

Visit our website www.kingschurch.com or email office@kingschurch.com Follow us on Facebook: @KCKonline or Instagram: @kingschurchkingston @thames.tots



MOORE
By Design

PROFESSIONAL KITCHEN DESIGN

The Hershams Centre, Hershams

T: 01932 379076

New online gallery with 150 images...

www.moorebydesign.co.uk

FUNERAL DIRECTORS AND MEMORIAL STONEMASONS

OUR FAMILY HELPING YOUR FAMILY

For over 240 years, eight generations of the Lodge Family have been privileged to help local families in their time of need. We provide all funerals, whether modern, traditional, green or alternative, with care and compassion.

THAMES DITTON

37 High Street 020 8398 4586

Branches also in Esher, Molesey & Surbiton

www.lodgebrothers.co.uk



Robert, Chris, Andrew & Michael Lodge

★ Trustpilot



"The staff at Lodge Brothers have been sympathetic, understanding and supportive. We will be forever grateful for their support"
- Mr Robinson



ASK ABOUT OUR
PRE-PAYMENT
FUNERAL PLANS

Lodge
BROTHERS 1780
the family you can turn to

FLORAL TRIBUTES • FUNERAL PLANS • WILLS & PROBATE

Discover Home of Compassion

Quality care and residents' wellbeing are at the core of Home of Compassion.



Providing residential, nursing and dementia care on a permanent and short stay basis.

Home of Compassion Care Home is a Grade II listed mansion in the village of Thames Ditton, Surrey. An outstanding place of beauty that offers residential, nursing and specialist dementia care for elderly residents within a restored and extended 18th Century Grade II listed mansion. Our luxurious living environment is home for up to 78 residents in a unique setting of approximately 2.5 acres on the bank of the River Thames in Surrey, overlooking the grounds of Hampton Court.

Comfort and wellbeing of residents

The main house boasts grand reception rooms including the magnificent first floor library and ground floor cinema room, private dining room, lounge and hair salon. There is a dedicated activities room with an extensive programme of events for residents' health and wellbeing, with chair

aerobics and gardening club being particular favourites. Customer service is crucial to the success of resident comfort and wellbeing. The Hotel Services Manager and team provide a 24-hour service and our menus use seasonal and local produce – some of which is grown in our very own vegetable garden - forming the basis of the extensive restaurant-grade menus. Room service is also available, with a selection of lighter meals and snacks. A concierge service attends to a host of other requirements from ordering flowers and arranging dry cleaning to booking theatre tickets.

Pastimes and mealtimes

At Home of Compassion there is a range of pastimes whether that's social, creative or physical to encourage good mental health. We help to ensure everyone has a purpose to their day, it's their life and they choose the way they want to live it.

We understand the importance of good nutrition and hydration. Of course, dining experiences are not only generated by the food eaten, the company and atmosphere can completely define our enjoyment. This is why we tailor the experience for everyone and welcome families and visitors to dine with us too.

Choice and independence

When it comes to individual bedrooms, we help our residents to put their unique stamp on their room and keep things just how they like them. All bedrooms are ensuite and have delightful furniture and furnishings. Our home is surrounded by beautiful landscaped gardens with several rooms having access to the gardens directly from their room.

Our bistro is perfect for socialising with family and friends and has a kitchen area for making drinks. If you prefer

to have some alone time, you can explore quiet nooks with comfy armchairs, classic novels and books on the shelves. To keep the mind sharp you'll find board games, cards and puzzles too - there's plenty to keep our residents engaged if they choose.

Proud to be 'Good'

Aria Care and the Team at Home of Compassion are delighted that, The Care Quality Commission (CQC), have awarded the home with the rating of 'Good' in all five key inspection areas for being safe, effective, responsive and well-led.

Whether you're looking for permanent or respite care, or would like some advice, please get in touch. We would be happy to give you a tour of our home and meet our team. Whatever your needs there is a place for you at Home of Compassion.

0808 223 5401

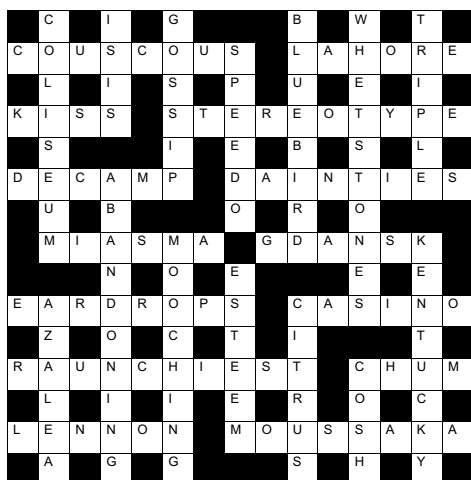
ariacare.co.uk

58 High Street, Thames Ditton,
Surrey KT7 0TT



Scan here
to find out more

HOME OF COMPASSION
ARIA CARE



Fergus Simpson

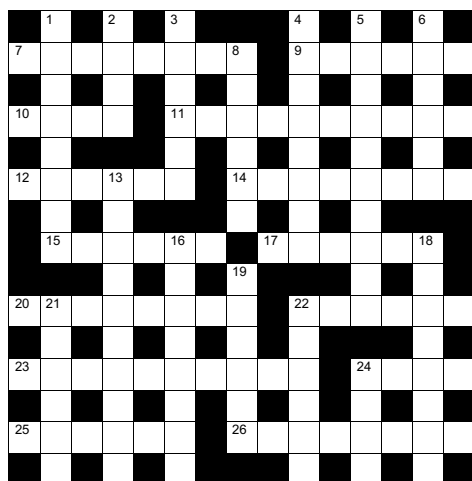
editor@residentsassociation.com

RHS and Merrist Wood Qualified

Hope

Switch off your engine when stationary

Autumn Crossword



by Howard and Bob Cruthers

The first three correct entries randomly opened after the closing date of August 5 2023, will win a £5 voucher to spend in local shops.

Please send the completed puzzle (or photocopy) enclosing your name and address, with the envelope clearly marked 'Crossword Competition' to:

Thames Ditton Today
Crossword Competition
24 High Street
Thames Ditton
KT7 0RY

Names and addresses of the winners will be published in the Autumn edition, unless otherwise requested.

ACROSS CLUES

- 7 Fun times, stealing cars? (8)
- 9 Greek goddess of love (6)
- 10 Cunning, like a coyote? (4)
- 11 Melodious thrushes (10)
- 12 Maladroit (6)
- 14 Masses; "The great ..." (8)
- 15 First World War coat, also worn by Inspector Clouseau (6)
- 17 Welsh Celtic language (6)
- 20 Unrealistic hopes (8)
- 22 Emperor (6)
- 23 Being skilled at taking unfair advantage (10)
- 24 Garden debauchee? (4)
- 25 Wrongfully replaces incumbent (6)
- 26 Stipulations (8)

DOWN CLUES

- 1 As regards genes, curly hair, for example (8)
- 2 Helen's city (4)
- 3 Palatable (6)
- 4 Hide school snack, in a safe place? (4, 4)
- 5 Le bakery (10)
- 6 Falsify, an instrument? (6)
- 8 Static effigy, but some times musical (6)
- 13 Roman town of Essex (10)
- 16 Lackadaisical (8)
- 18 Eccentric (6)
- 19 In repose (6)
- 21 Belief against the established one (6)
- 22 Swivelling wheel; medicinal oil (6)
- 24 Wetland bird, on the track? (4)

SERVICES, CLUBS, SOCIETIES AND GROUPS

SERVICES

Cheer (Concern and Help for East Elmbridge Retired)	Manager	01372 879321
Dittons & Weston Green NeighbourCare	Frankie Bell	07790 472993
Elmbridge Borough Council Community Support Services		
Thames Ditton Centre for the community	Mon & Thurs	0208 3985921
Thames Ditton Dementia Centre	Nikki Harding	01372 474526
Meals on Wheels, Community Transport, Dial-a-Ride, Alarm & Telecare services, Relief Carers	ask for service at central switchboard	01372 474552
Homesupport Elmbridge	Thomasina Breslin	01932 267128
Esher and District Stroke Club	Ann Pollock	0208398 6132
Voluntary Action Elmbridge	Sally Dubery	01372 463587
Surrey Youth and Adult Education Service	Elmbridge Area	020 8979 8334

GROUPS

1st Thames Ditton Brownies	Vanessa Corby	1stThamesDittonBrownies@gmail.com
3rd Thames Ditton Brownies	Emily Wattret	3rdthamesdittonbrownies@gmail.com
1st Weston Green (All Saints) Scout Group	Carole Needham	gsl@westongreenscouts.org.uk
1st Weston Green Guides	Sumathi Jeevaratnam	sumathi.jeevaratnam@gmail.com
2nd Weston Green Guides		2wgguides@gmail.com
2nd Thames Ditton Guides	Vanessa Corby	2ndThamesDittonGuides@gmail.com
1st Weston Green Brownies (All Saints)		1wgbrownies@gmail.com
3rd Weston Green Brownies		3wgbrownies@gmail.com
1st Weston Green Rainbows	Lizzie Owen	westongreenrainbows@gmail.com
4th Thames Ditton Ajax Sea Scouts	Chris West	chris.west@ajax.org.uk
Dittons Scout Group	Stuart Jack	07971 479740
Emberbrook Trefoil Guild	Mary Bowen	020 8398 6857
Friends of Bushey and Home Parks	Jean Smith	020 8977 9391
Girlguiding in Thames Ditton and Weston Green		dittonsdistrict.hjh@gmail.com
Molesey and Dittons Neighbourhood Watch	Chairman: John Haberfield	020 8398 5256
Parents and Toddlers(St Nicholas church)	Information	020 8398 7211
Ripieno Choir	Nick Harris	020 8399 7231
Surrey Bell-ringers	Giles Andre	020 8979 1994
Bereavement Café	St Nicholas Church Hall	020 8398 9641
Thames Tots (Kings Church, Speer Road)	Abby Kelly	Office@Kingschurch.com

CLUBS

Albany Motor Yacht Club	Secretary	01784466651
All Saints Weston Lunch Club	Alison Cruthers	07957 347170
Arts and Heritage Club	Carol Butcher	01932 867511
Cercle Francais d'Esher	Brigitte Tiller	01932 860842 brigitte@ptiller.com
Claygate Bridge Club	Hon. Secretary	020 8398 1710
Colets Health & Fitness	Giordano Orsini	020 8398 7108
Ditton Bridge Club	John Dagnall	02083984463
Dittons Skiff and Punting Club	Secretary	enquiries@dittons.org.uk
Dittons & Hinchley Wood Royal British Legion	Hon Secretary	020 8398 6263
Ember Players (Drama) Ember Sports Club	Elaine Sesemann	07801 943392

Ember Sports Club	Zenda Hedges	07717 304146
Ember Sports Club: Bowls	Sylvia Jones	01932 788701
Ember Sports Club: Croquet	Dr. David Cooke	01932 862841
Ember Sports Club: Tennis	Annabel Duncan	0208 786 6318
Esher Bowling Club	Roger Cooper	01372 468109
Esher Bridge Centre	Paul Whicker	01372 460157
Esher 41 and Ex-Round Tablers' Club	Dr. R. Tudor-Williams	020 8398 0108
Long Ditton Cricket Club	Nigel Hardy	020 8398 8361
Long Ditton Garden Club	Heather Harvey	020 8398 2642
Model Railway Society (Hampton Court)	Secretary	01932 241224
Old Cranleigh Rugby Club	Piers Cushing	07790 003731
Old Cranleigh Hockey Club	Simon Marshall (Men)	07801 737695
	Helen Hawes (Ladies)	07771 557900
Probus club, Hinchley Wood & the Dittons	Edmund Woolley	020 8398 3581
Probus Club, Sandown	Julian Rye	01932 976994
Probus Club of Molesey	Roger Marlow	0208 398 5460
Probus Club of Claremont	George Cameron	020 8224 1392
River Club (BMYC)	David Walker	0870 460 3586
Surbiton Croquet Club	Alec Thomas	020 8398 2391
Stragglers Running Club	Andy Howarth	07941 242348
Surbiton Golf Club	Secretary	0208 398 3101
Surbiton Hockey Club	Secretary	020 8398 2401
Thames Ditton Lawn Tennis Club	Steve Aukett	secretary@tdltc.com
Thames Ditton & Esher Golf Club	Mark Rodbard	020 8398 1551
Thames Ditton Squash Club (Colets)	Neal Brooker	020 8398 7108
Thames Ditton Cricket Club	Geoff Dryden	07813 805 645
		Geoff.Dryden@hotmail.com

SOCIETIES AND ASSOCIATIONS

Civil Service Pensioners' Alliance	Mrs Brenda Denby	0208 398 6054
Ember Choral	Linda Bridges	020 8399 5402
Esher and Molesey Garden Society	Jean Billett	01372 465961
Esher and District Amnesty International	Cherry Eddy (Campaigns)	0208 398 4377
Hampton Court Way Allotment Association	Lettings: Piotr Hennig	020 8398 5358
Long Ditton Youth Club	Toni Izard	07749 633973
Lynwood Allotment Society	Gill Vickers	020 8398 4870
Molesey and District Antiques Society	Linda Lambert	020 8398 1476
NADFAS (Decorative & Fine Arts) Kingston	Mrs. Valerie Windsor	020 8549 9967
Oxshott & Cobham Music Society	Cherry Eddy (Membership)	0208 398 4377
		cherryeddy102@gmail.com
Soroptimist Women	Jean Smith	07770 417814
Thames Ditton Women's Institute (W.I.)	Secretary	020 8398 8615

OTHER

Vera Fletcher Hall	Lettings: Amelia Crafts	08456 528 529
	Membership: Sue Morris	020 8224 0980
Weston Green Conservation Area Advisory Committee		wgcaac@outlook.com

Please contact the Editor to amend these listings



THEATRE IN THAMES DITTON

at the

Vera Fletcher Hall

Autumn Programme 2023

Saturday September 23, 7.30pm

Eva Cassidy, The Story

Using video, story and song, Elsa Jean McTaggart channels Eva Cassidy's musical voice through her own. £18



Saturday September 30, 7.30pm

Bluefire Theatre presents...

Marie Lloyd Stole My Life

A view of Victorian England, through the subversive lens of Music Hall. £15



Friday October 6, 7.30pm Film Night

Bride & Prejudice

Blending the best of mainstream Indian cinema with the classic Hollywood musical. Staying faithful to Jane Austen's story of a mother and father looking to marry off their daughters. £8



October 24-28, 7.45pm

Hinchley Manor Operatic Society Presents...

Musical Rebels

Take your musical theatre norms and toss them in the air because this show is unlike anything you have seen before, for all the right reasons! £15

HMOS Box Office 07568593493 online: www.ticketsource.co.uk/hmos

Saturday November 11, 7.30pm

A Christmas Carol

Join the great Victorian novelist Charles Dickens as he brings to life one of the most famous ghost stories of all time. £14



November 17 - 19 RC Sherriff Weekend

For details of this and other productions see www.verafletcherhall.co.uk

Online tickets at www.verafletcherhall.co.uk

4 Embercourt Road, Thames Ditton

CARPETS4U

NUMBER 1 MOBILE CARPET SHOWROOM



**Cosy up this Autumn,
add a new carpet
for that little
extra comfort**



**Epsom based, friendly, Father & Daughter family
run business with over 40 years' experience.**

**We bring 100's of carpet samples to your home
in a variety of colours all at competitive prices.**

CALL
Holly

01372 632 118

www.carpets4u.co.uk

10% DISCOUNT
ON PRESENTATION
OF THIS ADVERT

SPECIAL RATES
FOR SENIOR CITIZENS T&Cs APPLY



traders4u.co.uk

Over 1,500 Customer Reviews

Proud members of
Checkatrade.com
Where reputation matters



FREE FITTING & FURNITURE MOVING - ESTIMATES AND ADVICE

Care Detectives needed!

Care isn't just about carrying out pre-determined tasks, you need observational skills to notice when things are different, and the problem solving ability to find a solution.

If you would like to join our Team of Care Detectives, scan the QR code or call the number below...



Visiting Angels North Surrey

Call 07923 157 020

www.visiting-angels.co.uk/northsurrey
cjames@visiting-angels.co.uk

VisitingAngels® 
QUALITY AT HOME CARE

